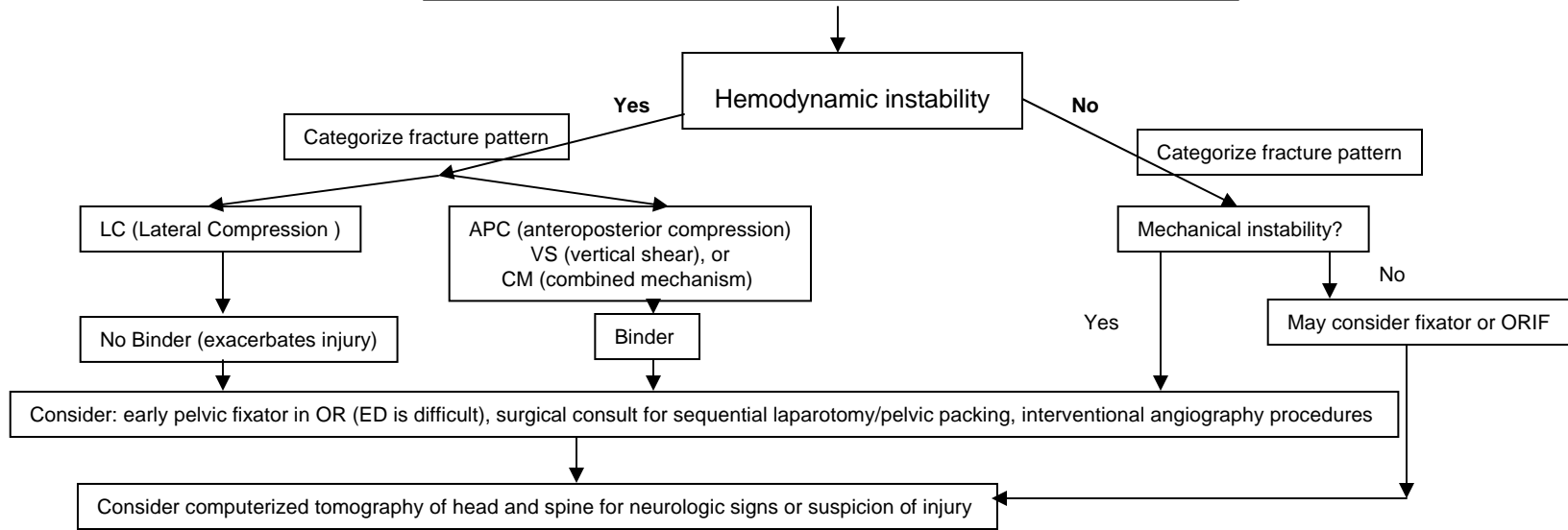


JTTS CLINICAL PRACTICE GUIDELINES FOR PELVIC FRACTURE CARE

Pelvic Fracture identified on primary or secondary survey examination or radiographs
Treat extra-pelvic causes of shock concurrently as identified



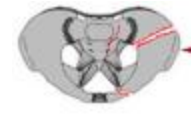
APC



LC



VS



CM

Name	Abbreviation	Mechanically Stable	Mechanically Unstable	Associated injury Risk
Anteroposterior Compression	APC	APC1	APC2, APC3	Bleeding
Lateral Compression	LC	LC1	LC2, LC3	Head
Vertical Shear	VS	No VS is stable	All VS are unstable	Bleeding and Head
Combined Mechanism	CM	Only APC1, LC1	Includes APC2-3, LC2-3, or VS	Bleeding and Head