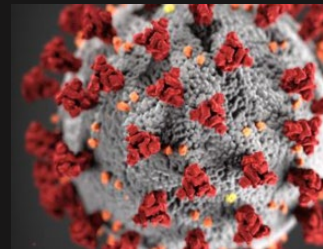




# Joint Trauma System Clinical Practice Guideline

## Special Edition v2.0

### Management of COVID-19 in Austere Operational Environments (Prehospital & Prolonged Field Care), 28 May 2020



---

*This practice management guide does not supersede DoD Policy. It is a guideline only and not a substitute for clinical judgment. It is based upon the best information available at the time of publication. It is designed to provide information and assist decision making. It should not be interpreted as prescribing an exclusive course of management. It was developed by experts in this field. Variations in practice will inevitably and appropriately occur when clinicians take into account the needs of individual patients, available resources, and limitations unique to an institution or type of practice. Every healthcare professional making use of this guideline is responsible for evaluating the appropriateness of applying it in the setting of any particular clinical situation.*

---

## Contributors

---

**Leads: MAJ William E. Harner, MC, USA; LTC Sean C. Reilly, MC, USA**

*Special thanks to Respiratory Therapists at Landstuhl Regional Medical Center.*

*Special thanks to Flight Paramedics and ECC Nurses at Fort Rucker, Alabama.*

*Special thanks to the TCMC training faculty at Fort Sam Houston, Texas*

CDR Mark T. Andres, MC, USN  
MAJ Nathan L. Boyer, MC, USA  
MAJ Daniel B. Brillhart, MC, USA  
Lt Col Daniel J. Brown, USAF, MC  
MAJ(P) Brian M. Cohee, MC, USA  
LTC Robert J. Cornfeld, MC, USA  
LTC Matthew D'Angelo, AN, USAR  
Capt William T. Davis, USAF, MC  
MAJ William E. Harner, MC, USA  
MAJ(P) David C. Hostler, MC, USA  
SFC Dennis M. Jarema, 18D/RN, ARNG  
MAJ Scott R. Jolman, SP, USA  
COL(ret) Sean Keenan, MC, USA  
SFC Paul E. Loos, 18D, USA  
LCDR Andrew J. Obara, MC, USN  
Maj Timothy R. Ori, USAF, MC  
COL Jeremy C. Pamplin, MC, USA  
LTC Douglas F. Powell, MC, USAR  
SFC Justin C. Rapp, 18D, USA

LTC(P) Jamie C. Riesberg, MC, USA  
LTC Sean C. Reilly, MC, USA  
MAJ(ret) Nelson Sawyer, SP, USA  
LCDR Nathaniel J. Schwartz, MC, USN  
MAJ Janet J. Sims, AN, USA  
MAJ Michal J. Sobieszczyk, MC, USA  
CPT Erick E. Thronson, AN, USA  
MAJ(ret) William N. Vasios, SP, USA  
COL Ramey Wilson, MC, USA  
MAJ Paul J. Auchincloss, SP, USA  
MAJ Melanie Bowman, AN, USA  
MAJ(P) Gregory Brown, MC, USA  
MAJ Steven Deas, USAF, MC  
MAJ Thomas Frawley, MC, USA  
CPT Jacob James, AN, USA  
MAJ John Jennette, MC, USA  
Maj Tyler Kallsen, USAF, MC  
SO1 Michael Stephens, USN  
COL (ret) Matthew Welder, AN, USA

## Table of Contents

---

Intended Scope and Audience .....	5
Guiding Principles .....	5
Key Assumptions.....	5
Key Definitions.....	6
Key References .....	6
Actions on Identification of a COVID-19 PUI.....	7
<b>Personal Protective Equipment Considerations.....</b>	<b>7</b>
Levels of PPE .....	7
Conservation of PPE .....	7
Mask Recommendations.....	8
<b>Quarantine (Asymptomatic Personnel with Identified Exposure) .....</b>	<b>8</b>
<b>Isolation (Symptomatic Personnel).....</b>	<b>8</b>
<b>Initial Medical Evaluation .....</b>	<b>9</b>
<b>Ancillary Tests .....</b>	<b>9</b>
Identifying Patients at Risk for Deterioration: .....	9
Consideration of Alternative Diagnoses.....	10
Testing in Austere Locations .....	10
<b>Isolation Berthing Location Considerations .....</b>	<b>10</b>
<b>Preparation of Isolation Berthing.....</b>	<b>11</b>
<b>Continued Monitoring Considerations for Personnel in Isolation.....</b>	<b>12</b>
<b>Command and Control Considerations .....</b>	<b>12</b>
Providing Medical Care to a COVID-19 PUI.....	13
<b>Oxygen Supply Considerations .....</b>	<b>13</b>
<b>Ventilator Considerations .....</b>	<b>14</b>
<b>Personnel Considerations.....</b>	<b>14</b>
<b>Equipment/Supplies.....</b>	<b>14</b>
<b>Clinical Care Considerations .....</b>	<b>14</b>
Airway Management.....	15
Cricothyroidotomy.....	15
Medication Options .....	16
Systemic Corticosteroids.....	16
Antimicrobial Therapy .....	16
Fever Management .....	16
Sedation and Analgesia .....	16
Bronchodilation .....	17
Respiratory Care.....	17
Lung-protective ventilation .....	17
Management of Oxygenation .....	18
Management of Ventilation .....	18
Reverse Trendelenburg.....	19
Secretion Management Considerations .....	19
Adjunctive Strategies for Severe ARDS .....	20
Anticipate Complications.....	21
Hemodynamics & Monitoring .....	22
Housekeeping & Prophylaxis.....	23
<b>Cardiopulmonary Resuscitation .....</b>	<b>24</b>
Patient Evacuation Considerations for Austere Medicine .....	24
<b>Medical Evacuation .....</b>	<b>24</b>
<b>Transition of Care for Evacuation .....</b>	<b>25</b>
Establishing a Plan for Telemedicine Consultation .....	26

Appendix B: Personal Protective Equipment (Courtesy Emory University CY20) .....	28
Appendix C: Intravenous Medication Drips (Courtesy SMOG CY20).....	30
Appendix D: ARDSNET Protocol (Courtesy ARDSnet CY08) .....	31
Appendix E: Oxygen Generator Guide.....	32
Appendix F: EMV+ 731 Ventilator Set-Up Guide.....	33
Appendix G: Hamilton T1 Set-Up Guide .....	34
Appendix H: BVM and SAVe II Set-Up Guide .....	35
Appendix I: Preparation for Transport Checklist (courtesy SMOG CY20).....	36
Appendix J: Virtual Critical Care Call (Vc3) Script (Courtesy PFC Group CY17).....	37
Appendix K: Minimum, Better, Best - Equipment and Supplies .....	39
Appendix L: Example Equipment Checklists .....	40

## *Intended Scope and Audience*

This guideline is intended for the provider operating in an austere, limited resource setting. Providers have varying levels of knowledge, training, and experience in basic critical care concepts. It is not intended to be all inclusive, but to spur further thinking and identify areas where resource limitations or known disease specifics change usual practice. The management strategy described is designed for a 24-hour hold of a single critically ill patient and is tailored to the equipment and medications typically available in austere operational settings (Role 1 and Expeditionary Role 2).

## *Guiding Principles*

- 1) Our primary mission remains the same. We must maintain the ability provide damage control resuscitation and damage control surgery in support of combat operations.
- 2) Prevention of disease transmission to medical personnel is a mission critical consideration for austere teams as there is generally very limited skill redundancy.
- 3) Primary capability limitations may include manpower, oxygen supply, ventilators, medications, and personal protective equipment (PPE).
- 4) Care of the critically ill COVID-19 patient is primarily supportive medical care plus appropriate disease transmission precautions.
- 5) Use of telemedicine to push critical care expertise as far forward as possible should be part of the operational plan.

## *Key Assumptions*

- 1) Most providers operating in austere locations have equipment geared towards combat casualty care, not necessarily care for patients in severe respiratory failure.
- 2) Oxygen supply is generally limited to a few portable oxygen tanks and oxygen concentrators not designed to provide high volume oxygen support.
- 3) Laboratory and radiologic evaluation capabilities are generally limited to non-existent.
- 4) Local and international supply lines have been significantly affected by COVID-19, with reduced resupply or delivery of disease specific supplies (e.g., testing kits and viral filters).
- 5) Time to medical evacuation may be significantly prolonged given the global nature of this crisis, lockdown over sovereign airspaces, and the need to limit impact to military air assets.
- 6) Most austere locations consist of relatively small camps (usually less than 100-300 personnel) with primarily younger, healthier population. However, some personnel may fall into high risk categories. As such, based upon current epidemiology, planning should account for 1-3 critically ill patients at each austere location.

## Key Definitions

- 1) **Quarantine:** Separation and restriction of movement (ROM) for personnel potentially exposed to a contagious disease but without symptoms of illness. These personnel may have been exposed to a disease and do not know it, or they may have the disease but do not show symptoms. This is a command function that is medically supported.
- 2) **Isolation:** Separation of sick personnel with a confirmed contagious disease or high index of suspicion (i.e. person under investigation) from people who are not sick. This is a medical function requiring command support
- 3) **Person Under Investigation (PUI):** A patient with signs and symptoms consistent with COVID-19 infection and possible exposure to the virus. In areas where COVID-19 is already widespread, symptoms alone may make the diagnosis of “PUI.” All PUIs must be isolated.
- 4) **Contact Spread:** Spread of disease via direct contact with an infected patient or contaminated surface. Contact precautions aim to mitigate this method of transmission.
- 5) **Droplet Spread:** Spread of disease via relatively large liquid particles that settle from the air, typically within a few feet. Droplet precautions aim to mitigate this method of transmission.
- 6) **Airborne Spread:** Spread of disease via small liquid particles (aerosols) that remain aloft for prolonged periods of time and may travel longer distances. Airborne precautions aim to mitigate this method of transmission.

## Key References

- 1) Alhazzani W, et al. Surviving Sepsis Campaign: Guidelines on the Management of Critically Ill Adults with Coronavirus Disease 2019 (COVID-19). *Crit Care Med*. First published 27 Mar 2020.
- 2) Brewster DJ, et al. Consensus Statement: Safe Airway Society principles of airway management and tracheal intubation specific to the COVID-19 adult patient group. *Medical Journal of Australia*. Published on-line ahead of print 01 May 2020. Published on-line ahead of print 01 May 2020.
- 3) Interim US Guidance for Risk Assessment and Public Health Management of Persons with Potential Coronavirus Disease 2019 (COVID-19) Exposures. Center for Disease Control and Prevention. Updated 15 April 2020.
- 4) Matos RI, et al. DoD COVID-19 Practice Management Guide: Clinical Management of COVID-19. Defense Health Agency. Updated 13 April 2020.
- 5) U.S. Army School of Aviation Medicine. Critical Care Flight Paramedic. Standard Medical Operating Guidelines (CY20 Version). Published January 2020.

## Actions on Identification of a COVID-19 PUI

---

### Personal Protective Equipment Considerations

- 1) The Centers for Disease Control and Prevention (CDC) recommends enhanced droplet precautions. Cover mucosal surfaces (eyes, nose, and mouth) and provide skin contact precautions.
- 2) N95 masks DO NOT work properly with facial hair; shaving is strongly recommended for anyone participating in direct patient care.
- 3) Personal Protective Equipment (PPE) should be donned/doffed per CDC instructions and following proper technique to minimize the risk of self-inoculation.
- 4) If possible, have a trained observer watch donning and doffing to guard against accidental exposure of medical personnel.
- 5) The following procedures carry a significantly higher risk of virus aerosol formation:
  - a. Tracheal Intubation
  - b. Extubation (accidental or planned)
  - c. Bag-Valve Mask Ventilation
  - d. Any disconnection of the ventilator circuit
  - e. Tracheal suctioning without in-line suction device
  - f. Tracheostomy (and Cricothyroidotomy)
  - g. Cardiopulmonary Resuscitation

### Levels of PPE

*Levels are based upon risk of disease and risk of procedure.*

**NOTE: the patient should wear a basic facemask (cloth or otherwise) whenever feasible to provide an additional barrier.**

**Minimum:** Face covering, eye protection glasses, gloves, and makeshift gown.

**NOTE: For patients with low probability of disease and where direct contact with the patient is low, gowns may not be required (mirroring conventional droplet precautions).**

**Better:** Surgical mask or N95 mask, face shield (either standalone or with mask) and eye protection, gloves, gown (surgical or contact), head covering.

**Best:** N95 mask (with or without surgical mask covering) with face shield and disposable head covering or hooded face shield (e.g., CBRNE pro-mask) along with gown and gloves.

### Conservation of PPE

- 1) COVID-19 can survive on various surfaces for up to 72 hours or longer.
- 2) Use cloth face covering when risk is low to conserve supply of surgical face masks and N95 masks needed for high risk procedures (e.g., endotracheal intubation).
- 3) Doff PPE in a manner that allows for it to be easily donned again without contacting contaminated surfaces (if possible).

- 4) For re-use of surgical face masks or N95 masks: while wearing gloves, store the mask in a paper bag in a dry, shaded/indoor area for 72 hours prior to using again. DO NOT use bleach or UV radiation (i.e. sunlight) to 'sterilize' the N95 – this will degrade mask effectiveness.
- 5) Eye protection glasses and face shields should be cleaned with a diluted bleach solution between uses.

### Mask Recommendations

U.S. National Institute for Occupational Safety and Health recommends the following for extended use and re-use of N95 respirators:

- 1) N95 masks maintain their effectiveness for at least 8 hours of continuous or intermittent use.
- 2) N95 masks should be discarded following aerosol generating procedures (e.g., endotracheal intubation) or when visibly contaminated with bodily fluids.
- 3) Consider using a large face shield that sits in front of the mask, wear a surgical mask over-top of the N95, or masking the patient to minimize contamination.
- 4) Perform hand hygiene with soap and water or an alcohol-based hand sanitizer before and after touching or adjusting the mask.

### Quarantine (Asymptomatic Personnel with Identified Exposure)

- 1) While separate berthing for quarantined individuals is optimal, living space is generally limited in austere settings. As such, berthing with individual rooms should provide adequate protection to allow quarantined individuals to remain in their room.
- 2) Individuals placed on quarantine per CDC screening guidelines are instructed to stay in their room and conduct self-observation for the development of any symptoms.
- 3) Teammates should check on the status of the quarantined individual several times daily and bring them food, water, and comfort items as needed.
- 4) Social distancing is strictly enforced when the individual needs to use the bathroom for toilet and hygiene. They should not use the gym, MWR, or any other common areas while under quarantine.
- 5) Depending on risk to force and mission requirements, mission critical personnel (including medical personnel) could be allowed to work with a cloth face covering and thoroughly clean both face covering and workspace at least daily. Early engagement of nonmedical leadership in such decision making is essential.

### Isolation (Symptomatic Personnel)

- 1) **PUI may not leave isolation** berthing unless instructed to do so by medical personnel.
- 2) When outside of the isolation berthing, PUI will be required to wear a cloth face covering and clean hands with soap and water or alcohol based hand sanitizer.
- 3) No visitors allowed within the isolation berthing.



## Initial Medical Evaluation

- 1) Pre-designate a provider as the COVID provider. This provider should perform all evaluations and procedures to limit exposure to other medical personnel, if possible. Remember, maintaining combat casualty care capability is still the priority. Balance the provider skillset and experience with potential impact on medical support for combat operations. The designated provider may not be the most experienced provider, but can consult with teammates as needed for management, procedures, and nursing care.
- 2) All patients presenting to sick call with any complaint should be screened for typical COVID-19 symptoms (fever, cough, dyspnea, gastrointestinal complaints) and risk of exposure.
- 3) If PUI presents to a provider other than the designated COVID attending provider, the patient should be provided a cloth face covering (or surgical mask) and escorted to pre-designated COVID treatment area.
- 4) If possible, all evaluations and treatment of PUI should be done outside the combat casualty care facility to mitigate potential for contamination of the facility.
- 5) Medical personnel performing the evaluation should wear the best available PPE (see [Appendix B](#)) balancing the supply of PPE with the threat of patient interaction.
- 6) Examination should include full vital signs including pulse oximetry, work of breathing assessment, pulmonary auscultation, skin temperature, and capillary refill.

## Ancillary Tests

**Minimum:** Rapid Malaria Testing (if febrile in malaria endemic region)

**Better** (Above +):

- 12-Lead ECG
- Rapid Flu Testing
- Rapid Dengue Testing
- I-STAT arterial blood gas or venous blood gas
- Ultrasound (cardiac and pulmonary)

**Best** (Above +):

- PA and LAT Chest Films
- Respiratory Pathogen Film Array (i.e. Biofire)
- COVID-19 PCR Testing
- Other laboratory testing listed [DoD COVID19 Practice Management Guide](#).

## Identifying Patients at Risk for Deterioration:

- 1) Among patients with mild to moderate symptoms and normal resting pulse oximetry, the risk of deterioration is increased in those presenting with dyspnea, desaturation on exercise testing, and epidemiologic risk factors for severe disease (age over 50, cardiovascular disease, pulmonary disease, immunosuppressive medications). These patients should be monitored closely and considered for early evacuation.

- 2) Exercise Test: Have the patient jog or walk in place for 3 minutes. Inability to complete the test or desaturation below SpO<sub>2</sub> <94% confers a higher risk for clinical deterioration. This is a triage test used by several New York hospitals during the pandemic to help gauge the need for closer monitoring.

### *Consideration of Alternative Diagnoses*

- 1) If a patient with symptoms possibly consistent with COVID-19 has known risk for or exposure to COVID-19, the patient should be managed as a PUI regardless of the differential diagnosis. This does not mean that alternative and/or comorbid diagnoses are impossible as COVID-19 patients can be co-infected with other pathogens.
- 2) Life threatening alternative diagnoses (e.g., pulmonary embolism, pneumothorax, acute myocardial infarction, etc.) should always be considered and managed according to standard practices for diagnosis and treatment.

### *Testing in Austere Locations*

- 1) Most austere locations will be unable to test for COVID-19 using an approved polymerase chain reaction (PCR) assay. However, if testing does become available, the following should be considered:
  - The false negative rate for COVID-19 PCR assay is likely to be significant enough to merit a minimum period of isolation (or quarantine) regardless of test result.
  - Testing priority should be guided by the CDC priority for testing balanced against operational priorities. For example, a patient with mild symptoms and no risk factors for decompensation may not warrant immediate testing. However, if combatant command determines that the individual is mission critical, the testing may be considered a higher priority.
- 2) Given significant resource constraints in an austere environment (specifically the limited duration of oxygen supply, medication supply, and limited quantity of PPE) coordination for evacuation to the appropriate level of care should be initiated as soon as possible, even if the patient does not necessarily need urgent evacuation as it may take more than 24 hours to execute an evacuation mission. This underscores the importance for early evacuation coordination while simultaneously planning for prolonged care.
- 3) [Appendix A](#) describes a tiered Medical Condition (MedCon) flowchart developed for standardization of terminology across an area of responsibility (AOR) and between medical providers, medical planners, and operational leadership.

### *Isolation Billeting Location Considerations*

- 1) Most austere locations have group billeting with shared ventilation, making the practice of 'self-isolation' impractical. While individual billeting with separated bathrooms is optimal, patient isolation cohorts may be the best option available with limited space.
- 2) Billeting should be able to expand to hold multiple patients of varying severity and allow adequate comfort for all patient categories (mild, moderate, and severe illness).
- 3) Billeting ventilation (i.e. environmental control units) should face away from any gathering areas and common walkways.

- 4) Billeting entrances should be well marked (e.g., “Isolation Area - No Unauthorized Access!”) and include posted guides on proper PPE procedures.
- 5) Consider location relative to bathrooms and areas traversed to get to the bathrooms. If available, designate bathrooms for isolated patients only. If there is engineering support, a pit toilet can be constructed. Disposable water bottles can be used as urinals.
- 6) Consider designating a critical care area within or near the isolation area separate from the main medical facility/aid station. Additionally, consider the route that must be traversed in order to transport the patient to an evacuation platform. The focus should be, as much as possible, on preserving the ability to provide combat casualty care, if needed.
- 7) If confirmatory testing is available, considering cohorting isolated patients by positive test vs. untested or negative test to avoid needlessly infecting PUIs who do not in-fact have COVID-19.

## Preparation of Isolation Billeting

- 1) ***Do not move PUI into isolation billeting before preparation is complete.***
- 2) ***All non-isolated personnel occupying the space must vacate the building.***
- 3) Allow PUI (while wearing a surgical mask) to gather personal belongings from lodging and move into isolation berthing.
  - a. Personal hygiene items
  - b. Bed sheets and clothing
  - c. Electronic devices + chargers
- 4) If PUI is unable to retrieve items, personnel with mask + gloves (at minimum) should retrieve any essential items.
- 5) **Basic medical items** remain in isolation billeting at all times:
  - a. Oral thermometer with box of sheaths
  - b. Pulse oximeter(s)
  - c. Alcohol based hand sanitizer
  - d. Stethoscope(s)
  - e. Manual blood pressure cuff(s)
  - f. Box of surgical masks
  - g. 14 day supply of Acetaminophen
- 6) **PPE Box** (for providers, prepositioned outside isolation berthing):
  - a. Min 3 gowns (either surgical or yellow contact precaution gowns)
  - b. Min 3 N95 masks
  - c. Min 6 surgical masks
  - d. Min 3 face shields and/or cleaned eyepro
  - e. Min 3 surgical caps or bouffant caps
  - f. Box of gloves
  - g. Tub of disinfectant wipes
  - h. Spray bottle of dilute bleach

- i. Paper towels (for cleaning)
- j. Trash bags

## 7) Life Support Items

- a. **Hydration:** Water bottles, juice containers, Gatorade, etc.
- b. **Food:** MREs, meal supplement drinks, snacks, etc. Provide hot-meals as able.
- c. **Hygiene:** Box of wet wipes. Encourage use of portable urinals (e.g., empty water bottles). If the bathroom must be shared with non-isolated personnel or if a designated bathroom traverses common areas, the PUI should be escorted by personnel wearing PPE while themselves wearing a mask. The escort will instruct anyone inside the bathroom to vacate prior to use. All surfaces used by the PUI must be cleaned with dilute bleach solution.
- d. **Trash:** Small trash receptacle with bag inside isolation berthing. Large receptacle double bagged will be placed immediately outside the isolation berthing. Biohazard sign will be placed on top. Only medical personnel or designated non-essential/non-high risk personnel will dispose of this trash to minimize risk to others. PUI will be instructed to tie off small bags and place in large container daily. Consider the local population access to trash and dispose following approved policy for biohazardous waste.

## Continued Monitoring Considerations for Personnel in Isolation

- 1) At minimum, pulse oximetry and temperature will be documented every 12 hours. COVID attending provider will determine the need for more frequent assessments.
- 2) Once a patient meets MedCon2 criteria or higher, continuous monitoring is recommended as their risk of rapid decompensation rises significantly. (MedCon2: Progressive symptoms that are concerning based upon provider clinical judgment. See [Appendix A.](#))
- 3) The Prolonged Field Care flowsheet provides a framework for recording frequent assessments and interventions. (See [JTS Documentation in Prolonged Field Care CPG.](#))
- 4) Consider using video chat (e.g., WhatsApp) to obtain vital signs and perform visual assessment of patient to minimize exposure in MedCon1. (MedCon1: Mild flu-like symptoms, SpO2>94% on room air, hemodynamically normal. See [Appendix A.](#)) Patients can take their own pulse oximetry reading and temperature at pre-determined intervals or cohort patients in isolation billeting can do it for each other.
- 5) If concerning symptoms develop, the COVID attending provider performs an in-person exam using the best available PPE.

## Command and Control Considerations

- 1) Notification of both medical and operational leadership is imperative and should occur soon after identification of a PUI.
- 2) Official notification in an approved format should be drafted and submitted to the command surgeon (or appropriate designee).
- 3) If MedCon2 or higher risk category, begin coordination for evacuation to a higher echelon of care as soon as possible.

- 4) Identify potential close contacts of PUI, screen for symptoms, and manage according to CDC guidelines for high risk exposure.

## Providing Medical Care to a COVID-19 PUI

---

### Oxygen Supply Considerations

(See [Appendix E](#))

- 1) Take inventory of the equipment and supplies available at your treatment facility. Important items include small oxygen concentrators (SAROS™), oxygen cylinders (D-cylinders and H-cylinders), and oxygen generating systems (POGS and EDOCS).
- 2) Identify the closest resource capable of filling oxygen cylinders. This may be a military biomedical maintenance team or host nation industrial gas supply company.
- 3) If you locate empty oxygen cylinders, begin the process of filling them right away. You will likely consume them quickly if you get a very seriously ill COVID-19 patient.
- 4) Develop a resupply plan for your oxygen cylinders. A very seriously ill COVID-19 patient will rapidly deplete oxygen supplies.
  - If your facility has the capability to fill oxygen cylinders, then develop a plan to refill tanks. Identify someone not directly involved in patient care since tank refill and patient care may need to occur simultaneously.
  - If your facility does not have the capability to refill oxygen cylinders, then develop a re-supply plan. One option is to coordinate medical cylinder exchange in conjunction with MEDEVAC missions.
- 5) The SAROS™ oxygen concentrator can provide up to 3 Lpm of 100% O<sub>2</sub>. However, when unplugged, battery will only last 30 minutes on continuous flow.
- 6) SAROS™ can be daisy-chained together to provide higher flow, approximating 5-6 Lpm. A suction Y-connector can be used to connect several together.
- 7) Ventilators waste less oxygen when using high pressure hose. A full D-cylinder providing 15 Lpm of O<sub>2</sub> via disposable oxygen tubing will last 20-30 minutes. The same D-cylinder providing 100% FiO<sub>2</sub> through a ventilator connected via green high pressure hosing will last 30-45 minutes (depending on minute ventilation).
- 8) Reducing minute ventilation (e.g., sedation with or without paralysis) and oxygen consumption (reduce FiO<sub>2</sub> to absolute minimum to attain SpO<sub>2</sub> 88-92%) will extend oxygen supplies.
- 9) If transporting patient(s) to an evacuation pick-up site, anticipate delay and bring double the estimated oxygen supply.

## Ventilator Considerations

(See [Appendix F](#), [Appendix G](#) and [Appendix H](#))

- 1) Minimum requirement for an effective ventilator in severe hypoxic respiratory failure:
  - a. Must be able to provide Positive End-Expiratory Pressure (PEEP)
  - b. Must allow for titration of tidal volume and respiratory rate (control minute ventilation)
  - c. Must be able to provide supplemental oxygen greater than room air (>21% FiO<sub>2</sub>)
- 2) The Zoll (Impact) EMV+ 731 transport ventilator is available in many military equipment sets and certified to function in all aviation environments. IMPACT 754 ventilators are sufficient, but do not provide Pressure Control - Inverse Ratio Ventilation capability (discussed below).
- 3) Hamilton T1 transport ventilators provide specialized support options, including advanced pressure control options and integrated high flow oxygen therapy. Certified for ground transport and rotary-wing transport, but not approved for fixed wing aircraft (pressurized cabin) transport.
- 4) SAVe II rescue ventilators are an option with limited capability: PEEP only up to 10 cm H<sub>2</sub>O and minute ventilation only up to 8 Lpm. Oxygen reservoir tubing for the air intake is required to provide supplemental oxygen. If this is the only device available at your location, arrange transfer to a location with more advanced ventilator as soon as possible.
- 5) SAVe I rescue ventilator has no adjustability and cannot provide PEEP. DO NOT manage critically ill COVID-19 patients with this device. Manual ventilation with a Bag-Valve-Mask (BVM), PEEP valve, and supplemental oxygen will be more effective.

## Personnel Considerations

- 1) Minimize the number of personnel required to care for the PUI. Establish a priority list of who will be available to assist. Ensure that the rest of the team can maintain the combat casualty care capability.
- 2) In cases where evacuation may be delayed, establish work-rest cycles, allowing for adequate time to hydrate, eat, and sleep. This has been shown to reduce PPE waste, minimize provider exhaustion, and prevent accidental exposures.
- 3) Ambulatory PUIs (“walking wounded”) can potentially assist in monitoring and providing care to more seriously ill patients.
- 4) Consider having someone (not directly involved in patient care) act as a runner.

## Equipment/Supplies

The equipment and supplies needed for the management of a critical ill COVID-19 patient are summarized in [Appendix K](#) and [Appendix L](#).

## Clinical Care Considerations

Initial reports suggest that among COVID-19 patients who develop critical illness, the rapid decline typically starts about 5-7 days following the first symptoms. Closely monitoring these patients during this time period is critical for early intervention.

## Airway Management

- 1) Minimize viral aerosol formation and direct exposure of medical personnel.
- 2) Use the best available PPE for high risk procedures like endotracheal intubation. (See [Appendix B.](#))
- 3) Gauge the need for inserting an advanced airway on the patient work of breathing. COVID-19 patients decompensate fairly rapidly – a low threshold for intubation allows more time for preparation and may prevent complications.
- 4) If the COVID attending provider does not feel comfortable with placing an advanced airway, consider teleconsultation and/or waiting for arrival of more experienced personnel (e.g., evacuation team). Never try to place an advanced airway unless you know how to do it.
- 5) One assistant is sufficient during intubation in most cases; however, an additional assistant can be standing by in the “warm” zone at least 2 meters away wearing appropriate PPE.
- 6) **Passively pre-oxygenate** with 100% O<sub>2</sub> for at least 5 minutes. Consider placing a surgical mask on the patient (over top of nasal cannula or non-rebreather mask).
- 7) Utilize strict **rapid sequence intubation technique** – avoid BVM ventilation if possible. If available, place viral filter in-line during use of BVM.
- 8) Utilize **video laryngoscopy** (i.e. GlideScope) if available for intubation to limit direct exposure of the treatment team. If unable to intubate or obtain adequate vocal cord visualization on the first pass, consider the placement of a laryngeal mask airway (LMA) with viral filter. Ventilate with the BVM and PEEP valve until oxygenation is adequate. Then, re-attempt the procedure.
- 9) **Chest X-Ray** may not be available or feasible to confirm tube placement. Utilize end-tidal carbon dioxide (EtCO<sub>2</sub>) monitoring and auscultation to confirm placement.
- 10) General guide for tube size and depth is as follows: for males use 8.0 endotracheal tube (ETT) inserted to 25cm at the incisors; for females use 7.0 ETT inserted to 23cm at the incisors. In general, place as large an ETT as possible since secretions may be an issue.
- 11) If available, place heated humidification device (e.g., Hamilton H900) or heat and moisture exchanger (HME) in the INHALATION circuit of the ventilator tubing. If available, place a HEPA filter (microbiological filter) or HME-F (HME plus microbiological filter) in the EXHAHALTION circuit of ventilator tubing.

## Cricothyroidotomy

Cricothyroidotomy for definitive airway management:

- 1) Many medics and other providers operating independently in far-forward environments are trained to use cricothyroidotomy as their primary definitive airway. While the use of a surgical airway first line is appropriate in patients presenting in-extremis or with the loss of an airway (e.g., severely injured trauma patients with facial or neck trauma), patients with COVID-19 generally present with relatively more gradually progressive symptoms and intact native airways.
- 2) Early intra-theater transfer to a facility with advanced capabilities is preferable to early cricothyroidotomy whenever possible.
- 3) Laryngeal mask airway or other supraglottic airway placement may be a sufficient bridge to definitive airway placement. Placement of a mask over the LMA (hole cut in the middle for the LMA) will minimize aerosol spread from any air leak. PEEP above 10 cm H<sub>2</sub>O via LMA may not be



effective and may exacerbate any leak around the LMA. Sedation and analgesic requirements for an LMA may be slightly more than with a cricothyroidotomy.

- 4) Cricothyroidotomy without the ability to provide mechanical ventilation consumes significant resources (manpower required to bag-ventilate the patient with PEEP, inefficient delivery of oxygen via bag-ventilation, and significant aerosol risk to those providing care).

## Medication Options

### Systemic Corticosteroids

Professional societies recommend consideration of systemic corticosteroids in the treatment of COVID-19 related moderate to severe Acute Respiratory Distress Syndrome (ARDS). If unfamiliar with corticosteroid treatment regimens, discuss with advanced provider via telehealth prior to initiating therapy.

### Antimicrobial Therapy

(to treat possible bacterial pneumonia co-infection)

- 1) Consider early use of azithromycin (500mg PO or IV daily for a minimum of 5 days) to treat mild to moderate community acquired pneumonia (CAP) in patients with lower respiratory tract symptoms and fever.
- 2) If azithromycin is not available, doxycycline (100mg PO or IV q12h) can be substituted for empiric treatment of bacterial pneumonia.
- 3) For patients with severe symptoms, recommend adding ceftriaxone (IV 2gm q24h is the best option) or ampicillin-sulbactam (3gm IV q6hr is a good alternative) or ertapenem (1g IV or IM q24h if it is the only available option).
- 4) Levofloxacin (750mg PO or IV q24h) is another reasonable option for empiric treatment of severe community-acquired pneumonia.

### Fever Management

Fever management with acetaminophen every 6 hours (1000mg IV or 975mg PO or PR) as needed for temperature over 38°C.

### Sedation and Analgesia

- 1) Sedation goal is **Richmond Agitation and Sedation Scale (RASS)** -1 to -2 (comfortable, transiently responsive to verbal stimulation) and synchronous with the ventilator. Increase sedation and/or add narcotics to improve patient-ventilator synchrony. Use of paralytics may be required for very severe cases (as discussed below).
- 2) **Ketamine** may cause increased secretions which may require more frequent suctioning. If medication options are limited, consider more frequent dosing of midazolam to decrease the dose of ketamine required and potentially decrease the secretion burden.
- 3) A reference guide for starting and titrating a ketamine drip along with useful adjuncts is provided in [JTS Analgesia and Sedation Management during Prolonged Field Care CPG](#).
- 4) **Combined use of multiple sedatives** (i.e. propofol, dexmedetomidine and/or midazolam) may act synergistically to decrease the total sedative dose and help to mitigate the hypotensive effects of



propofol, however multiple continuous drips is not recommended outside of an ICU setting. A ketamine drip may be combined with bolus doses of additional medications.

- 5) **Caution should be used with combining propofol and dexmedetomidine**, especially in younger patients with higher vagal tone due to increased risk of bradycardia and hypotension.
- 6) Intermittent or doses of **fentanyl or hydromorphone** may be useful for analgesia and optimizing ventilator synchrony.
- 7) **Low dose vasopressors** may be necessary to support hemodynamics in the face of deeper sedation and higher PEEP. (See [Appendix C.](#))

### Bronchodilation

- 1) Use of metered-dose-inhalers (MDIs) over nebulized bronchodilators to treat wheezing will help to minimize risk for infectious aerosol.
- 2) If the ventilator tubing does not have a capped inlet for medication administration (aka MDI adapter) -- 1) clamp the ETT, 2) disconnect the ventilator, and 3) administer the MDI (6 puffs) directly into the INHALATION circuit. Then, reconnect the ventilator and unclamp ETT to insufflate the medication.
- 3) Magnesium Sulfate 2gm IV over 20 minutes (similar to treatment of an asthma exacerbation) may be a safer alternative for treatment of bronchospasm given the risks of disconnecting the circuit.

### Respiratory Care

#### Lung-protective ventilation

- 1) Initiate lung-protective ventilation strategy.
  - a. Tidal volume 4-6mL/kg ideal body weight (IBW)
    - IBW – Men = 50 kg + (2.3 kg x (height in inches - 60))
    - IBW – Women = 45.5 kg + (2.3 kg x (height in inches - 60))
  - a. Maintain peak pressure less than 35 mm Hg
  - b. Maintain SpO<sub>2</sub> 88-95% or PaO<sub>2</sub> 55-80 mm Hg
  - c. Permit Hypercarbia (but keep arterial pH > 7.30)
  - d. Use ARDSnet protocol. (See [Appendix D.](#))
- 2) If ETT must be disconnected from the ventilator for ANY reason, clamp the ETT to prevent decruitment and minimize viral aerosol formation.
- 3) If in-line suction devices are not available, de-recruitment will likely occur with suctioning. Salvage recruitment maneuvers may be necessary.
- 4) On the EMV+ 731 (mode AC-V) a recruitment maneuver can be done as follows:
  - a. Change upper limit of Peak Inspiratory Pressure (PIP) alarm to 50 cm H<sub>2</sub>O;
  - b. Decrease tidal volume as low as possible (50mL);
  - c. Increase PEEP to 30-40 cm H<sub>2</sub>O;

- d. Hold for 40 seconds (if signs of hemodynamic instability develop, stop the recruitment maneuver, and resume prior settings);
  - e. Increase PEEP to 2 cm H<sub>2</sub>O ABOVE prior PEEP setting;
  - f. Increase tidal volume back to prior setting;
  - g. Return upper limit of PIP alarm to prior setting; and
  - h. Monitor for any persistence of hemodynamic instability or persistently high PIP (Although rare, the high PIP encountered during RMs can cause pneumothorax).
- 5) **Dry Lung.** The mantra “a dry lung is a happy lung” probably still applies in severe COVID-19 care; over resuscitation is likely to be harmful. Fluid resuscitation should be guided by assessment of volume responsiveness. If available and evacuation is significantly delayed, loop diuretics can be used to attain a net even volume status, providing the patient is hemodynamically stable (i.e. not requiring vasopressor support).

### Management of Oxygenation

- 1) **Escalate PEEP** to 12 cm H<sub>2</sub>O as aggressively as possible as hemodynamics allow to optimize oxygenation, minimize FiO<sub>2</sub> needs, and extend oxygen supply.
- 2) Use the **ARDSNet Protocol** LOW PEEP table as a guide for further titration of PEEP. Refer to [JTS Acute Respiratory Failure CPG](#).
- 3) Be prepared to start **vasopressors** and judicious use of IVF to support pre-load in the face of high PEEP (aka PEEP tamponade).
- 4) Consider a **combination of paralysis and prone positioning** early to lengthen duration of available oxygen supply.
- 5) **Consider Inverse Ratio Ventilation** (IRV) once patient reaches PEEP 18 cm H<sub>2</sub>O on the LOW PEEP table.

### Management of Ventilation

- 1) If blood gas analysis is not available, a general EtCO<sub>2</sub> goal of 35 mm Hg +/- 5, is adequate. However, if blood gas analysis is available (i.e. i-STAT), recommend obtaining a baseline PCO<sub>2</sub> and correlate with EtCO<sub>2</sub>, especially since the gradient between the two is much wider in patients with significant lung disease (i.e. an EtCO<sub>2</sub> of 40 may actually represent a PCO<sub>2</sub> of 60 with a pH around 7.24).
- 2) The manual breath button on the bottom left of EMV+ 731 allows for manual measurement of plateau pressure (Pplat). The Pplat goal is less than 30 cm H<sub>2</sub>O with a secondary goal of maintaining driving pressure (Pplat minus PEEP) below 15 cm H<sub>2</sub>O. In the absence of Pplat, a PIP target of less than 35 cm H<sub>2</sub>O is also reasonable.
- 3) If Pplat is greater than 30 cm H<sub>2</sub>O, decrease set tidal volume by 1 mL/kg steps (about 50-80 mL). Titrate set respiratory rate (RR) up increments of 2 bpm to maintain pH and EtCO<sub>2</sub> at goal. Avoid RR above 35 bpm given significant risk for breath stacking and auto PEEP (which will eventually make the patient hemodynamically unstable).
- 4) If an i-STAT with blood gas cartridges are available, consider serial blood gas evaluation (adjusting frequency depending on patient stability).

### *Reverse Trendelenburg*

Reverse Trendelenburg positioning (head of bed up, spine straight) can help offload abdominal pressure contributing to increased thoracic pressure. This can be extremely helpful maneuver to improve pulmonary compliance in obese patients and/or those with intra-abdominal hypertension.

### *Secretion Management Considerations*

- 1) Increased secretions and mucous plugging of the bronchial tree are extremely common causes for increased oxygen requirement and difficulty with ventilation in patients with severe respiratory failure from lung infections.
- 2) Anecdotal evidence regarding COVID-19 patients suggests that secretions are problematic in some patients. Additionally, in-line suction (closed system) devices that minimize aerosol formation and de-recruitment are not usually available in austere settings.
- 3) **Heated humidification** prevents desiccation (drying out) of secretions and promotes ciliary clearance.
  - Heated-humidification devices are designed to be used along with ventilators (e.g., Hamilton H900).
  - Heat-Moisture Exchangers (HME) are supplies that fit in-line with the ventilator tubing and trap heat and moisture within the circuit.
  - HME Filters (HME-F) are supplies that fit in-line with the ventilator tubing and provide HME and microbiologic filtration.
- 4) **Pharmacologic treatment for secretions** generally falls into one of three categories: mucolytics (break up mucous), bronchodilators, or anti-sialagogues (anti-salivation)
  - **Mucolytics:**
    - Pre-treat with for 10-15 minutes.
    - 20% N-acetylcystine (Mucomyst) as 1-2mL direct instillation into ETT every 6 hours as needed for secretion control.
    - 3% Saline (Hypertonic Saline) as 5mL direct instillation into the ETT every 6 hours as needed for secretion control.
  - **Bronchodilators:** Albuterol will help dry up secretions. While ultimately decreasing secretion volume, bronchodilators may also increase the risk of a mucous plug formation. Use with caution.
  - **Anti-Sialagogues:** Has the greatest effect on oral secretions with modest effect on pulmonary secretions (and therefore not routinely recommended for COVID-19 patients). However, antisialagogues such as scopolamine and glycopyrrolate are often effective at attenuating the increased secretions caused by high dose ketamine.
- 5) **Percussive chest physiotherapy** is often provided by respiratory therapists in Role 3 facilities to facilitate secretion clearance. Manual (with hands) or mechanical (with percussive physical therapy devices) can be used to create the same effect.

### Adjunctive Strategies for Severe ARDS

- 1) There is no single right answer as to which strategies should be used in severe ARDS. Each approach may or may not be feasible due to the resource constraints of the austere environment.  
If unfamiliar with these techniques, obtain teleconsultation.
- 2) **Pressure Control** – may include Inverse Ratio Ventilation (PC-IRV):
  - a. EMV+ 731 with the most recent software package has the capability to do PC-IRV. While using AC-P mode, PC-IRV is achieved by increasing the Inspiratory-to-Expiratory (I:E) ratio above 1:2 (i.e. 1:1, 2:1, 3:1 and higher).
  - b. PC-IRV cannot fully approximate Airway Pressure Release Ventilation (APRV), but is still the best available salvage mode using EMV+ 731.
  - c. Once PEEP is maximized (or limited by peak inspiratory pressure) and oxygenation is still not yet at goal, increase the I:E ratio incrementally.
  - d. Tidal volume goal remains the same as with conventional ventilation; adjust cycle time (60/RR) to optimize minute ventilation.
  - e. Higher I:E ratios are not physiologic, so PC-IRV will likely require increased depth of sedation for patient comfort and synchrony.
- 3) **Paralysis for Patient-Ventilator Synchronization**
  - a. Adequate depth of sedation is essential prior to starting a paralyzing medication; recommend RASS greater than -2.
  - b. SCCM and [DoD COVID-19 Practice Management Guide](#) recommend intermittent paralytics over continuous infusions, if possible. Continuous infusion can result in prolonged paralysis if not closely monitored, especially if muscle twitch monitor is not available.
  - c. Paralysis with Vecuronium:
    - Bolus: 5mg to 10mg every 60-90 minutes as needed.
    - Infusion: 0.8 to 1.2mcg/kg/min (approx. 80mcg/min for 80kg).
    - Without pump: 40mg vecuronium in 250mL bag (50mL wasted) of normal saline yields 40mg/250mL = 160mcg/mL. For 80mcg/min = 0.5mL/min ~ 1gt every 12 seconds in 10gt tubing.
  - d. **Monitoring Goal:**
    - Absence of muscle movement and no evidence of spontaneous breathing on the ventilator. If possible, titrate to 2/4 TOF (testing device likely only available for surgical teams).
    - Increased HR and BP may suggest inadequate sedation and should be empirically treated by increasing sedation.
    - Once the patient is stabilized, consider holding the paralytic at least once every 24 hours to provide for assessment of sedation depth.
    - DO NOT hold sedation until paralytic wears off unless absolutely necessary (e.g., sudden hypotension).

#### 4) Prone Positioning

- a. “Awake Self-Proning” with High Flow Nasal Cannula devices has been successfully used in patients with moderate to severe COVID-19 lung disease. If patients are unable to tolerate prone positioning (i.e. strong desire to remain in a tripod position), DO NOT force them into the prone position.
- b. Reference [DoD COVID-19 Practice Management Guide](#) for full details on prone positioning precautions and procedures.
- c. Placement of either a central line or additional peripheral access is strongly encouraged **PRIOR** to prone positioning.
- d. Have push-dose vasopressor medication available during the process of prone positioning and un-positioning, as hypotension frequently occurs.
- e. Proning cycle is generally 16 hours of prone positioning each 24 hours. Match the proning cycle to the daily care plan as much as possible.
- f. Prone positioning may not be feasible or safe during evacuation.

#### *Anticipate Complications*

- 1) Pneumothorax can occur with higher PIP. Sudden increases in PIP and/or hemodynamic instability may indicate pneumothorax.
- 2) Pneumomediastinum with subcutaneous emphysema can also develop with the use of high PEEP (typically from dissection of air into the adventitia of small bronchi/bronchioles). The development of crepitus across the chest, neck, and/or upper extremities suggests the presence of this condition. Tension physiology from pneumomediastinum is EXCEEDINGLY rare and usually no intervention is needed.
- 3) Acute kidney injury leading to renal failure is a genuine threat to seriously ill COVID-19 patients. Patients unable to make urine can develop fatal arrhythmias from electrolyte abnormalities and acidotic blood. They need to be evacuated to a location capable of renal replacement therapy as soon as possible.
  - a. Oliguria is defined as less than 0.5 mL/kg/hour of urine output (UOP).
  - b. Oliguric patients should receive a bolus of 500 cc crystalloid. This may be repeated once if UOP does not improve. If the patient remains oliguric after a 1L bolus, consider the onset of acute tubular necrosis (ATN), especially if UOP remains low for more than 6 hours.
  - c. As formal creatinine testing for acute kidney injury (AKI) is not likely to be available, consider urine dipstick testing with attention to specific gravity, proteinuria, and hematuria:
    - An abnormally low (dilute) specific gravity in the setting of oliguria suggests tubular damage and the inability to concentrate urine
    - Significant proteinuria can be seen in ATN; however, this is not specific and can be seen in a variety of acute medical conditions
    - Hematuria may suggest the presence of myoglobinuria – consider rhabdomyolysis as a cause of acute kidney injury.

- d. If UOP suddenly declines or stops, flushing the Foley and/or performing a bladder ultrasound scan can help determine if the problem is mechanical (Foley blockage) or organic (true kidney injury).
- e. Once ATN sets in, **do not aggressively fluid resuscitate or diurese** simply to meet UOP goals. Use alternative markers of fluid responsiveness (like blood pressure response to passive straight leg raise) to help determine the need for further fluids and vasopressor medications.
- f. Monitor closely for the development of electrolyte disturbances, specifically metabolic acidosis and hyperkalemia. Use medical management of hyperkalemia as appropriate. The [JTS CPG on Hyperkalemia and Dialysis in the Deployed Setting](#) describes field-expedient techniques for peritoneal dialysis; however, this should be done in concert with teleconsultation.

### *Hemodynamics & Monitoring*

- 1) An IV pump is recommended over dial-a-flow and drip-chamber titration (if available).
- 2) When outdoors, place the monitor, ventilator, and IV pumps upwind and as far away as possible from the patient to minimize contamination of caregivers.
- 3) Establish arterial line monitoring early when possible for patients with severe COVID-19 disease as they often become hemodynamically unstable.
- 4) If possible, establish central access early in anticipation of the need for continuous vasopressors. Multiple peripheral IVs may also be needed for infusions of sedatives, analgesia, antibiotics, etc.
- 5) A conventional central venous catheter can be placed through an introducer catheter (i.e. Cordis) to expand the number of available infusion ports. This should be done during the initial insertion under sterile technique, if possible.
- 6) Some severely ill COVID-19 patients may develop dilated cardio-myopathy with florid cardiogenic shock. This may be secondary to systemic inflammation, stress, or a direct viral myocarditis. Patients may also develop arrhythmias. Manage arrhythmias following Red Cross advanced life support guidelines.
- 7) An unexpected change in the vital sign trends or hypotension out of proportion to sedation and PEEP should merit evaluation for additional causes of shock. Limited transthoracic echocardiography may be useful in discriminating between hypovolemic, cardiogenic, and distributive shock (in personnel trained to perform the assessment).
- 8) Utilize dynamic parameters (i.e. skin temperature, capillary refilling time, pulse pressure variation, blood pressure response to passive straight leg raise, and/or serum lactate measurement) over static parameters to help guide the need for further fluid resuscitation ([Surviving Sepsis Campaign COVID-19 Guidelines](#)).
- 9) Norepinephrine is the first line vasopressor for most causes of shock. Fixed rate vasopressin infusion (0.04 units/min) is useful as an early adjunct in non-cardiogenic shock; start vasopressin when norepinephrine reaches doses above 12mcg/min. Epinephrine is sometimes the only option available in remote locations.
- 10) Vasopressors should be titrated to a MAP goal of 60- 65 mm Hg. ([Surviving Sepsis Campaign COVID-19 Guidelines](#).)

### *Continued care & Prophylaxis*

- 1) Nasogastric or orogastric tube (NG/OGT) should be placed early for gastrointestinal decompression. If medical evacuation is significantly delayed (greater than 24-48 hours), consider starting enteral nutrition.
- 2) Enteral nutrition is contraindicated in hemodynamically unstable patients (i.e. those on high or increasing doses of vasopressors). Low volume tube feeding on patients with stable low doses of vasopressors is generally safe.
- 3) At a minimum, confirm position of gastric tube placement with auscultation over both lung fields and the abdomen along with aspiration of gastric contents. Urinalysis test strips for pH may provide an addition method for NG/OGT placement confirmation in patients not on acid suppressive therapy.
- 4) Goal 25-30 kcal/kg/day + 1-1.2 gm/kg protein; however, this might be difficult, especially in the absence of formal concentrated tube feeds.
- 5) Meal supplement drinks are not sufficient. For example, one Muscle Milk Light bottle contains only 150 kcal and 28 gm protein in 500 mL, which is extremely dilute compared to most tube feeding formulations. This potentially increase extra-vascular lung water (especially in the setting of critical illness) with minimal benefit to nutritional status.
- 6) A more concentrated alternative is to use commercially available protein powder (with similar caloric/protein content per scoop) at 1/4 the recommended concentration and mix in a blender until no clumps are visible. Administer in small volume boluses (e.g., 60mL via Toomey syringe) as tolerated every 2 to 4 hours to a goal of 1 gm/kg/day protein content.
- 7) Further recommendations for enteral nutrition can be found in [JTS CPG for Nutritional Support Using Enteral and Parenteral Methods](#).
- 8) If possible, blood sugar checks should be obtained at least every 6 hours, particularly for those with known diabetes mellitus.
- 9) Venous Thromboembolism (VTE) prophylaxis should be given as long as there are no contraindications. Administer 40 mg enoxaparin SQ daily (avoid if evidence of renal failure) or 5000 units heparin SQ every 8 hours (use heparin if concern for bleeding).
- 10) If pharmacologic prophylaxis is not available, manual ankle plantar/dorsi-flexion range of motion exercises and lower extremity massage every two hours. DO NOT use ACE wraps. Anecdotal evidence suggests that these patients are at high risk for blood clots, reinforcing the importance of appropriate VTE prophylaxis.
- 11) Stress-Ulcer Prophylaxis should be given to all intubated patients as long as there are no contraindications. Ranitidine 50 mg IV every 8 hours or 150 mg via NG/OGT twice daily. Famotidine 20 mg IV every 12 hours or 20 mg via NG/OGT twice daily may be used in lieu of ranitidine. It would also be reasonable to use a proton pump inhibitor, if available (i.e. pantoprazole 40 mg IV daily or omeprazole via NG/OGT daily).
- 12) Ventilator Associated Pneumonia prevention bundle applied to the limitations of an austere environment includes:
  - Head-of-bed elevation to 30 degrees
  - Suction the oropharynx as needed
  - Brush teeth every 12 hours



- 13) The JTS CPG for [Nursing Interventions in Prolonged Field Care](#) provides in-depth discussion of the nursing tasks that may be required if medical evacuation is significantly delayed.

## Cardiopulmonary Resuscitation

Cardiopulmonary arrest is a difficult topic. In general, in cases of complete cardiac arrest, Cardiopulmonary Resuscitation (CPR) in an austere environment may not be a wise use of resources unless the etiology for the arrest is rapidly reversible. Additionally, significant aerosol generation will invariably occur during CPR of a COVID-19 patient. It is reasonable during a pandemic to establish medical rules of engagement that discourage providers from performing CPR on infected patients. If CPR is performed, efforts should focus on reducing provider exposure to COVID-19 and prioritizing strategies with lower aerosol formation risk. (See [DoD Covid-19 PMG](#).)

## Patient Evacuation Considerations for Austere Medicine

---

Each AOR should develop its own plan for categorizing COVID-19 patients (for the purposes of isolation and evacuation) based on guidance found in DoD policy.

## Medical Evacuation

Medical Evacuation using MedCon levels described in [Appendix A](#) is one example.

- 1) Patient movement should be anticipated for COVID-19 PUIs categorized as MedCon 2 or higher. There is no reason to delay notification request for evacuation.
- 2) Ground and Air Medical Transport will depend on local CASEVAC/MEDEVAC notification plan and CASEVAC/MEDEVAC platforms available for transport.
- 3) When clinically and operationally feasible and within the provider's scope of practice, obtain central venous access in anticipation of need for multiple infusions, including vasopressors, during transport. Obtain at least two peripheral IV's or one peripheral plus one central line access prior to transport, if possible.
- 4) Early placement of arterial line for invasive pressure monitoring is recommended, if available.
- 5) If there is evidence or suspicion for acute coronary syndrome or myocarditis, coordinate the medical management via teleconsultation prior to transport, if possible.
- 6) Patients requiring >3 Lpm oxygen support to maintain oxygen saturations >93% may not tolerate the hypoxic environment of aeromedical evacuation even with cabin altitude restrictions:
  - a. Given concerns surrounding risk associated with procedures done emergently during transport, consider the need endotracheal intubation prior to transport.
  - b. The most experienced provider should perform the procedure to secure the airway. Use a video laryngoscope (if available) and rapid sequence induction.
  - c. Minimize people in the room during the procedure. Verify all staff have the best available PPE. (See [Appendix B](#).)
  - d. Consider consulting the Advanced Critical Care Evacuation Team (ACCET) DSN 312-429-BURN (2876) before transporting patients on moderate to high ventilator settings (PEEP > 14 and FiO<sub>2</sub> > 70%). Refer to JTS CPG for [Acute Respiratory Failure](#).



- e. If prone ventilation is to be utilized in-flight, it should be initiated on the ground with adequate time to document patient stability before transport.
- 7) If intubated, an NG/OGT should be placed pre-flight and attached to intermittent suction.
- 8) Pre-drawn and pre-mixed medications with primed tubing are examples of time saving measures to be optimized on the patient prior to transport.
- 9) Prepare patient records for handoff including medical notes, ECGs, laboratory results, and imaging results (if available).
- 10) Prepare patient belongings and ID/passport to accompany the patient.
- 11) Place PPE for flight on patient including eye protection and ear protection, and DO NOT forget face covering if not intubated.

## Transition of Care for Evacuation

- 1) Early patient reporting allows the evacuation team to prepare.
  - a. The sending facility medical team should provide contact information (if possible)
  - b. The evacuation team should contact the sending facility prior to mission (if possible)
- 2) Handoff to the transport team should include:
  - a. Up-to-date COVID-19 testing status (PUI vs confirmed)
  - b. Current vital signs, exam findings, and recent trends or changes
  - c. Current medication regimen if initiated (including antibiotics and anticoagulants)
  - d. Critical care medication regimen (sedation, analgesia, paralysis, and vasopressors)
  - e. Current PPE status, oxygen requirements and ventilator settings
  - f. Any potential COVID-19 related complications identified during management (e.g., heavy respiratory secretions)
- 3) Upon evacuation team arrival to receive the patient, handoff report should be repeated with key elements above, including any recent patient changes.
- 4) Transition to the evacuation team monitoring and support equipment will present risk of exposure to healthcare team. In an attempt to mitigate this risk, consider the following:
  - a. Personnel should be limited to those directly involved in the care of the patient.
  - b. Best available PPE should be worn by everyone involved in the care transition.
  - c. ETT clamping technique should be instituted to limit aerosol creation during all ventilator circuit breaks including transfer to evacuation team ventilator.
  - d. Sufficient time should be allotted to confirm adequate oxygenation and ventilation prior to departure of the evacuation team.

## Establishing a Plan for Telemedicine Consultation

- 1) Regional Medical Operations Cell should prospectively publish local and regional PACE (Primary-Alternate-Contingency-Emergency) plans for both operational and clinical consultation. Forward-stationed medical teams should test these options PRIOR to needing urgent consultation.
- 2) Make use of telehealth resources such as the ADVISOR line (866-972-9966, or 833-238-7756), which includes the Virtual Critical Care Consultation (VC3) service. The ADVISOR program is specifically designed for operational virtual health support. Additionally, many VC3 consultants have deployed to remote locations and can help work through the unique problems faced in austere settings. Additional information on ADVISOR can be obtained by emailing [dod.advisor\\_office@mail.mil](mailto:dod.advisor_office@mail.mil)

- 3) Alternatively, contact the following MEDCENs and ask for the on-call critical care staff:

Landstuhl Regional Medical Center, Germany. DSN: 314-590-7141 Intensive Care Unit

Walter Reed National Military Medical Center, MD. (301) 295-4611, option 4 Command Duty or (301) 295-4810 Emergency Room

Madigan Army Medical Center, WA. (253) 968-1110 Information Desk

Brooke Army Medical Center, TX. (210) 916-0808 Emergency Room

Naval Medical Center Portsmouth, VA. (757) 592-5473 Critical Care, (757) 953-1365 Emergency Room

Eisenhower Army Medical Center, GA. (706) 787-6938/6019 AOD or (706) 787-6039 Emergency Room

Travis Air Force Base Medical Center, CA. (707) 423-3040 ICU or (707) 423-3825 Emergency Room

Tripler Army Medical Center, HI. (808) 433-6661 Information Desk or (808) 433-4032 ICU or (808) 433-3707 Emergency Room

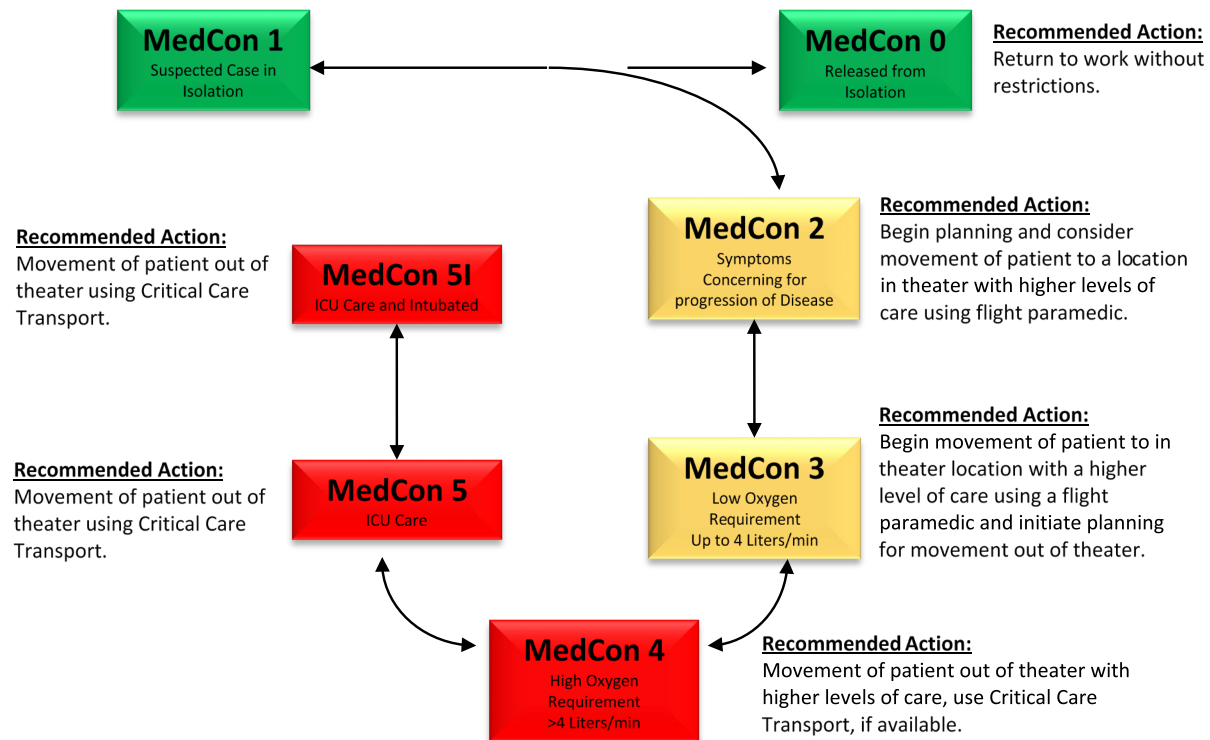
William Beaumont Army Medical Center, TX. (915) 892-6880 House Supervisor or (915) 742-2139 ICU

Keesler Air Force Base Medical Center, MS. (228) 376-0500 Emergency Room

- 4) Always be conscious of the need to maintain patient privacy and operational security.
- 5) Using a standard telemedicine script will improve communications and recommendations for patient management. (See [Appendix H.](#))

## Appendix A: Medical Condition Levels

## Medical Condition (MedCon) Levels for COVID-19



### Intent and Implications on Evacuation:

**MedCon 1:** Mild flu-like symptoms, SpO<sub>2</sub> >94% on room air, hemodynamically normal. Overall, there is low likelihood of these patients significantly worsening in the next 24-48hrs. These patients may not need evacuation to higher level of care.

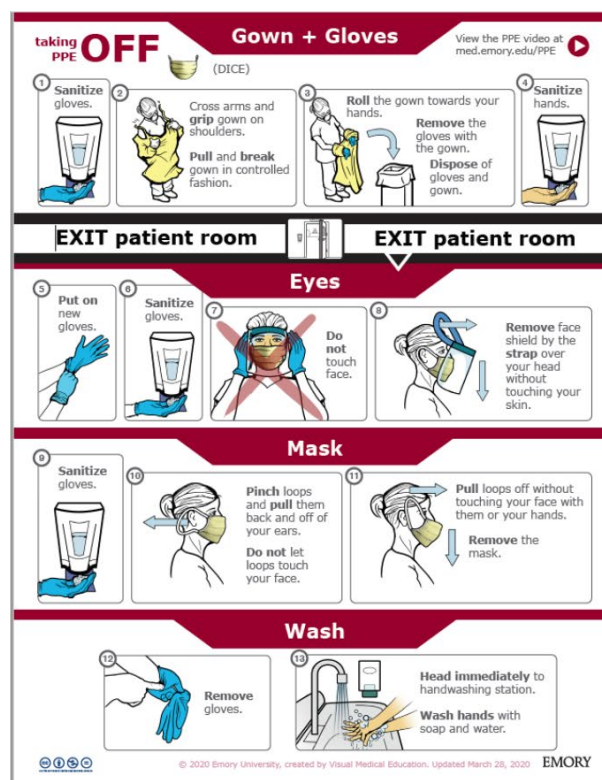
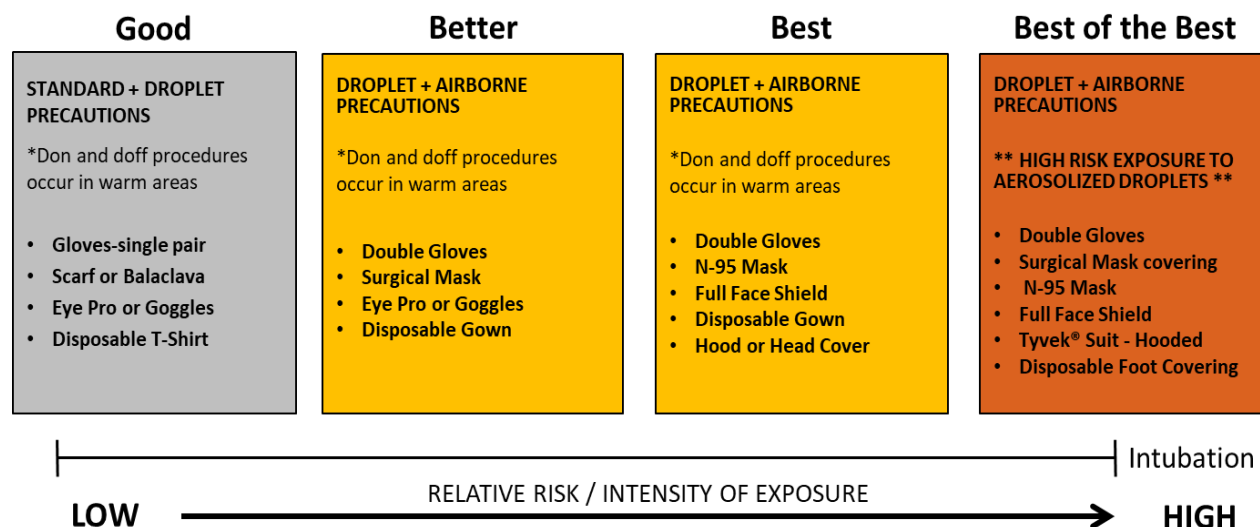
**MedCon 2:** Progressive symptoms that are concerning based upon provider clinical judgement. This is an “early warning” phase to prepare to evacuate.

**MedCon 3:** Requiring supplemental O<sub>2</sub> to maintain SpO<sub>2</sub> >92% at flow rates *not* significantly exceeding oxygen condenser capabilities (i.e. SAROS). While these patients may not necessarily exceed local capabilities, they represent a population at risk of rapid decompensation in the next 24-48hrs.

**MedCon 4:** Requiring supplemental O<sub>2</sub> to maintain SpO<sub>2</sub> >92% at flow rates *beyond* condenser capabilities (i.e. need to use D-cylinder oxygen support). These patients exceed the local capabilities for prolonged care of a patient in respiratory failure and/or will deplete oxygen supplies in less than 24 hours. These patients represent a high risk for hemodynamic deterioration and/or emerging requirement for mechanical ventilation.

**MedCon 5:** Patients requiring advanced airway management up to and including definitive airway placement and/or with continued hemodynamic instability. These patients need urgent medical evacuation with critical care support to Role 3 or higher facilities.

## Appendix B: Personal Protective Equipment (Courtesy Emory University CY20)





## Appendix B: Continued...

**Mask Guidance****SURGICAL MASKS****DISCARD MASK IF:**

- Contaminated with blood, respiratory or nasal secretions, or other bodily fluids from patients.
- Obviously damaged or hard to breathe through.
- At the conclusion of your shift.

**EXTENDED USE:**

- Wear mask for ENTIRE shift unless soiled, damaged, or hard to breathe through.
- Do not touch the mask. If you touch or adjust your mask, you must immediately perform proper hand hygiene.
- Leave the patient care area if you need to remove your mask.
- Consider use of a face shield over mask.

**REUSE:**

- Masks that fasten via ties that are unable to be undone and are torn need to be discarded.
- Masks should be carefully folded so the outer surface is held inward and against itself to reduce contact with the outer surface during storage.
- Keep used masks in a clean, breathable container such as a paper bag between uses. Do not store in a plastic bag. Keep in a clean space outside patient room, such as a wall locker next to patient room or top of the isolation cart. To prevent accidental use of another's mask, label the container:
  - First initial and last name of owner
  - Strap of mask with first initial and last name of owner

**Glossary**

**Extended Use** — The practice of wearing the same mask/respirator for repeated close contact encounters with several patients, without removing the mask/respirator between patient encounters.

**Reuse** — The practice of using the same mask/respirator for multiple encounters with several patients but removing it after each encounter.

**N95 RESPIRATORS**

Extended and limited reuse of respirators were recommended for conserving respirators during previous respiratory pathogen outbreaks and pandemics.

Use face shield over N95 respirator to reduce surface contamination.

Perform hand hygiene with soap and water or an alcohol-based hand sanitizer before and after touching or adjusting respirator.

**DISCARD N95 RESPIRATOR IF:**

- Used for aerosol-generating procedure.
- Contaminated with blood, respiratory or nasal secretions, or other bodily fluids from patients.
- Obviously damaged or hard to breathe through.
- Reused (donned/doffed) a maximum of five times.

**EXTENDED USE:**

Extended use may be implemented when multiple patients are infected with the same respiratory pathogen and patients are placed together in dedicated waiting rooms or hospital wards.

**REUSE:**

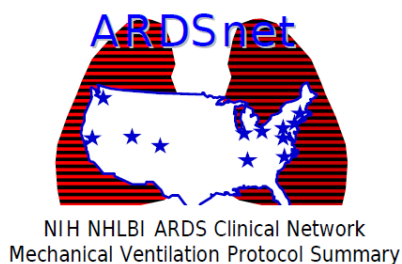
- Keep used respirators in a clean, breathable container such as a paper bag between uses. Do not store in a plastic bag. Keep in a clean space outside patient room such as a wall locker near patient's room or top of the isolation cart. To prevent accidental use of another person's respirator, label the container:
  - First initial and last name of owner
  - Strap of respirator with first initial and last name of owner
- Avoid touching the inside of the respirator. If inadvertent contact with the inside of the respirator, perform hand hygiene as described above.
- Use a pair of clean (non-sterile) gloves when donning a used N95 respirator and performing a user seal check. Discard gloves after the N95 respirator is donned and any adjustments are made to ensure the respirator is sitting comfortably on your face with a good seal.

### Appendix C: Intravenous Medication Drips (Courtesy SMOG CY20)

<b>KETAMINE (KETALAR)</b>						
<b>Dosing Range: 15-50mcg/kg/min</b>						
MIX 500 mg/500 mL (NS or D5W) CONCENTRATION = 1 mg/mL						
Pt. Weight	Dose	Rate	Micro 60 gtt/mL	Macro		
				20	15	10 gtt/mL
kg	mcg/kg/min	mL/hr	gtt/min	gtt/min	gtt/min	gtt/min
80	15	72	72	24	18	12
	20	96	96	32	24	16
	25	120	120	40	30	20
	30	144	144	48	36	24
	35	168	168	56	42	28
	40	192	192	64	48	32
	45	216	216	72	54	36
	50	240	240	80	60	40

<b>NOREPINEPHRINE (LEVOPHED) OR EPINEPHRINE (ADRENALINE)</b>					
<b>Dosing Range: 2-20mcg/min</b>					
MIX 4 mg/500 mL (LR or D5W) CONCENTRATION = 8 mcg/mL					
Dose	Rate	Micro 60 gtt/mL	Macro		
			20 gtt/mL	15 gtt/mL	10 gtt/mL
mcg/min	mL/hr	gtt/min	gtt/min	gtt/min	gtt/min
2	15	15	5	4	3
4	30	30	10	8	5
6	45	45	15	11	8
8	60	60	20	15	10
10	75	75	25	19	13
12	90	90	30	23	15
14	105	105	35	26	18
16	120	120	40	30	20
18	135	135	45	34	23
20	150	150	50	38	25

## Appendix D: ARDSNET Protocol (Courtesy ARDSnet CY08)

**INCLUSION CRITERIA: Acute onset of**

1.  $\text{PaO}_2/\text{FiO}_2 \leq 300$  (corrected for altitude)
2. Bilateral (patchy, diffuse, or homogeneous) infiltrates consistent with pulmonary edema
3. No clinical evidence of left atrial hypertension

**PART I: VENTILATOR SETUP AND ADJUSTMENT**

1. Calculate predicted body weight (PBW)  
**Males** =  $50 + 2.3 [\text{height (inches)} - 60]$   
**Females** =  $45.5 + 2.3 [\text{height (inches)} - 60]$
2. Select any ventilator mode
3. Set ventilator settings to achieve initial  $V_T = 8 \text{ ml/kg PBW}$
4. Reduce  $V_T$  by  $1 \text{ ml/kg}$  at intervals  $\leq 2$  hours until  $V_T = 6 \text{ ml/kg PBW}$ .
5. Set initial rate to approximate baseline minute ventilation (not  $> 35 \text{ bpm}$ ).
6. Adjust  $V_T$  and RR to achieve pH and plateau pressure goals below.

**pH GOAL: 7.30-7.45****Acidosis Management: (pH  $< 7.30$ )**

If pH 7.15-7.30: Increase RR until pH  $> 7.30$  or  $\text{PaCO}_2 < 25$   
(Maximum set RR = 35).

If pH  $< 7.15$ : Increase RR to 35.

If pH remains  $< 7.15$ ,  $V_T$  may be increased in  $1 \text{ ml/kg}$  steps until pH  $> 7.15$  (Pplat target of 30 may be exceeded).  
May give  $\text{NaHCO}_3$

**Alkalosis Management: (pH  $> 7.45$ )** Decrease vent rate if possible.

**I: E RATIO GOAL:** Recommend that duration of inspiration be  $\leq$  duration of expiration.

**PART II: WEANING****A. Conduct a SPONTANEOUS BREATHING TRIAL daily when:**

1.  $\text{FiO}_2 \leq 0.40$  and  $\text{PEEP} \leq 8$  OR  $\text{FiO}_2 \leq 0.50$  and  $\text{PEEP} \leq 5$ .
2. PEEP and  $\text{FiO}_2 \leq$  values of previous day.
3. Patient has acceptable spontaneous breathing efforts. (May decrease vent rate by 50% for 5 minutes to detect effort.)
4. Systolic BP  $\geq 90 \text{ mmHg}$  without vasopressor support.
5. No neuromuscular blocking agents or blockade.

**OXYGENATION GOAL:  $\text{PaO}_2$  55-80 mmHg or  $\text{SpO}_2$  88-95%**

Use a minimum PEEP of  $5 \text{ cm H}_2\text{O}$ . Consider use of incremental  $\text{FiO}_2$ /PEEP combinations such as shown below (not required) to achieve goal.

**Lower PEEP/ higher  $\text{FiO}_2$** 

$\text{FiO}_2$	0.3	0.4	0.4	0.5	0.5	0.6	0.7	0.7
PEEP	5	5	8	8	10	10	10	12

$\text{FiO}_2$	0.7	0.8	0.9	0.9	0.9	1.0
PEEP	14	14	14	16	18	18-24

**Higher PEEP/ lower  $\text{FiO}_2$** 

$\text{FiO}_2$	0.3	0.3	0.3	0.3	0.3	0.4	0.4	0.5
PEEP	5	8	10	12	14	14	16	16

$\text{FiO}_2$	0.5	0.5-0.8	0.8	0.9	1.0	1.0
PEEP	18	20	22	22	22	24

**PLATEAU PRESSURE GOAL:  $\leq 30 \text{ cm H}_2\text{O}$** 

Check Pplat (0.5 second inspiratory pause), at least q 4h and after each change in PEEP or  $V_T$ .

If Pplat  $> 30 \text{ cm H}_2\text{O}$ : decrease  $V_T$  by  $1 \text{ ml/kg}$  steps (minimum =  $4 \text{ ml/kg}$ ).

If Pplat  $< 25 \text{ cm H}_2\text{O}$  and  $V_T < 6 \text{ ml/kg}$ , increase  $V_T$  by  $1 \text{ ml/kg}$  until Pplat  $> 25 \text{ cm H}_2\text{O}$  or  $V_T = 6 \text{ ml/kg}$ .

If Pplat  $< 30$  and breath stacking or dys-synchrony occurs: may increase  $V_T$  in  $1 \text{ ml/kg}$  increments to 7 or  $8 \text{ ml/kg}$  if Pplat remains  $\leq 30 \text{ cm H}_2\text{O}$ .

**B. SPONTANEOUS BREATHING TRIAL (SBT):**

If all above criteria are met and subject has been in the study for at least 12 hours, initiate a trial of UP TO 120 minutes of spontaneous breathing with  $\text{FiO}_2 \leq 0.5$  and  $\text{PEEP} \leq 5$ :

1. Place on T-piece, trach collar, or CPAP  $\leq 5 \text{ cm H}_2\text{O}$  with PS  $\leq 5$
2. Assess for tolerance as below for up to two hours.
  - a.  $\text{SpO}_2 \geq 90$ : and/or  $\text{PaO}_2 \geq 60 \text{ mmHg}$
  - b. Spontaneous  $V_T \geq 4 \text{ ml/kg PBW}$
  - c.  $\text{RR} \leq 35/\text{min}$
  - d. pH  $\geq 7.3$
  - e. No respiratory distress (distress = 2 or more)
    - > HR  $> 120\%$  of baseline
    - > Marked accessory muscle use
    - > Abdominal paradox
    - > Diaphoresis
    - > Marked dyspnea
3. If tolerated for at least 30 minutes, consider extubation.
4. If not tolerated resume pre-weaning settings.

**Definition of UNASSISTED BREATHING  
(Different from the spontaneous breathing  
criteria as PS is not allowed)**

1. Extubated with face mask, nasal prong oxygen, or room air, OR
2. T-tube breathing, OR
3. Tracheostomy mask breathing, OR
4. CPAP less than or equal to  $5 \text{ cm H}_2\text{O}$  without pressure support or IMV assistance.

## Appendix E: Oxygen Generator Guide

### Medical Oxygen Generator (MOG)

Otherwise known as Expeditionary Deployable Oxygen Concentrator System (EDOCS). EDOCS is designed to provide 120Lpm of 93 percent oxygen and medical grade compressed air for patients, anesthesia machines, and mechanical ventilators. It can also be used to fill high pressure oxygen cylinders up to 2250 psig.



Representative Picture Only

Fills cylinders to 2250 PSIG using M Cylinder Charging Station:

- "H" (6000 L) Cylinder 4.5 Minutes
- "D" (370 L) Cylinder 4x 60 Minutes
- "E" (620 L) Cylinder 4x 60 Minutes

### Portable Oxygen Generator System (POGS)

The Portable Oxygen Generation System (POGS 33) is designed to provide 33Lpm of 93 percent oxygen and medical grade compressed air for patients, anesthesia machines, and mechanical ventilators. It can also be used to fill high pressure oxygen cylinders up to 2200 psig.

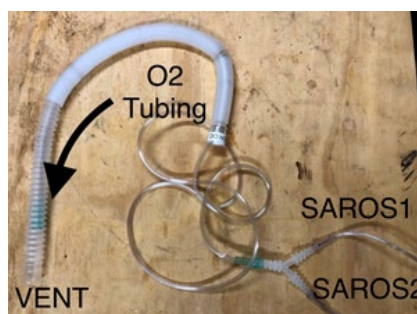


Fills cylinders to 2200 PSIG with Micro Boost / HV Booster:

- "H" (6000 L) Cylinder not possible / 3 Hours with HV Booster
- "D" (370 L) Cylinder 52 Minutes / 12 Minutes with HV Booster
- "E" (620 L) Cylinder 1.5 Hours / 19 Minutes with HV Booster

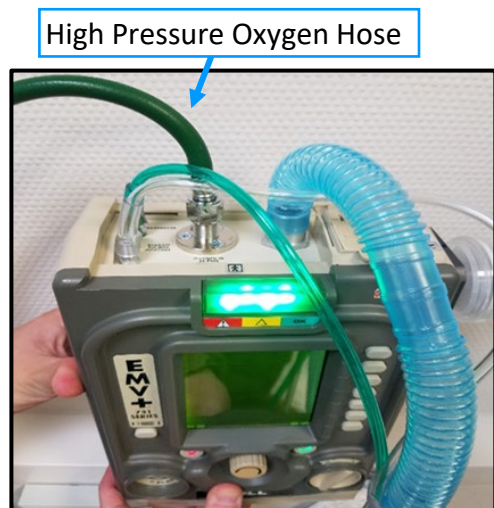
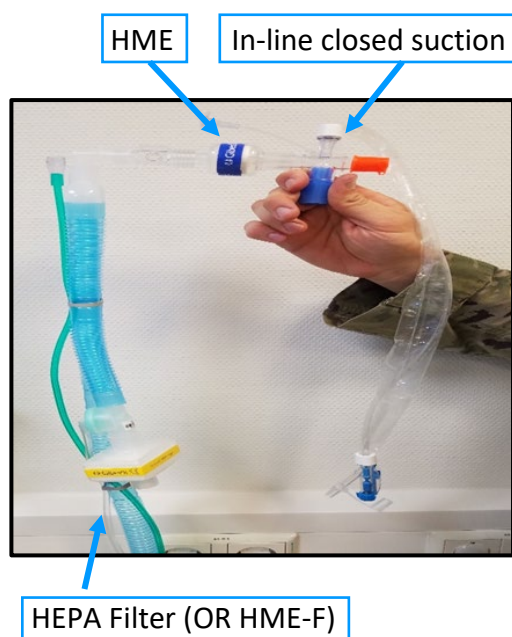
### Oxygen Generator Field Portable (OGFP)

Otherwise known as SAROSTM Oxygen System. OGFP is a small, battery operated oxygen concentrator used to provide low flow (up to 3Lpm) of continuous oxygen support for combat casualties. The oxygen support can be increased by filling an oxygen reservoir using two devices (as pictured below).





## Appendix F: EMV+ 731 Ventilator Set-Up Guide



\*For austere set-up the, simply inserting one HME-F filter between the ETT and ventilator tubing circuit is good enough. (See [Appendix H.](#))

### Recommended Items:

**Tubing:** Circuit Vent Single Limb WYE Adult/Pedi 1S  
MFG: Zoll Medical MFG CAT #: 820-0106-00

**Closed In Line Suction:** In Line Suction 20S 12F  
MFG: Smith Medical/Meditrade MFG CAT #: Z210-12

**Heat Moisture Exchange:** Humid-Vent 2S up to 1500ML  
MFG: TELEFLEX MFG REF #: 14412

**End Tidal CO<sub>2</sub> Adapter:** Adapter Airway Disposable Zoll  
MFG: Zoll Medical MFG CAT #: 8000-0260-01

**Oxygen Hose:** Hose ASB Cond 6FT OXY DIS HEX NUT  
MFG: AMVEX MFG REF #: HS06ODFDF

**HEPA Filter:** ISO-GARD HEPA Light Filter (Machine)  
MFG: Teleflex MFG REF #: 28022

**OR**

**HME-F:** Filter Humid-Vent Compact up to 1000ML  
MFG: Teleflex MFG REF #: 19402

### Order of Assembly:

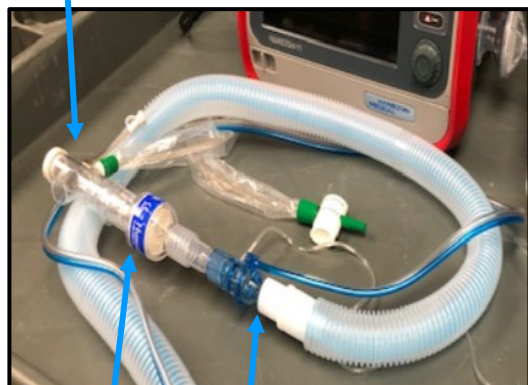
ETT>>In-Line Suction>>HME>>End-Tidal CO<sub>2</sub>  
Adapter>>Tubing>>Ventilator

### Additional Considerations:

1. Reference JTS Respiratory Failure CPG for initial settings and ARDSnet protocol card for adjustment.
2. ETT should be temporarily clamped with a padded hemostat during any circuit break.
3. HME (or HME-F) should be placed in the inspiratory limb to humidify gas delivered to patient.
4. HEPA filter (or HME-F) should be placed at the end of the expiratory limb to minimize viral aerosol.
5. HEPA filter (or HME-F) should be placed in the air inlet to mitigate device contamination.
6. A BVM connected to oxygen supply with viral filter and PEEP valve should always be available!
7. Oxygen hose should be connected directly to 50psi oxygen source (e.g., D-cylinder), NOT to a flow meter!

## Appendix G: Hamilton T1 Set-Up Guide

In-line closed suction



HME

EtCO<sub>2</sub> Adapter

HEPA Filter (or HMEF)

\* For austere set-up the, simply inserting one HME-F filter between the ETT and ventilator tubing circuit is good enough (see Appendix H)

### Recommended Items:

**Tubing:** Breathing Circuit Set, COAXIAL  
MFG: Hamilton PART #: 260240

**Closed In Line Suction:** In Line Suction 20S 12F  
MFG: Smith Medical/Meditrade MFG CAT #: Z210-12

**Heat Moisture Exchange:** Humid-Vent 2S UP TO 1500ML  
MFG: Teleflex MFG REF #: 14412

**End Tidal CO<sub>2</sub> Adapter:** Adapter Airway Disposable Zoll  
MFG: Zoll Medical MFG CAT #: 8000-0260-01

**Oxygen Hose:** Hose ASB Cond 6FT OXY DIS HEX NUT  
MFG: AMVEX MFG REF #: HS06ODFDF

**HEPA Filter:** ISO-GARD HEPA Light Filter (Machine)  
MFG: Teleflex MFG REF #: 28022

OR

**HME-F:** Filter Humid-Vent Compact up to 1000ML  
MFG: Teleflex MFG REF #: 19402

### Order of Assembly:

ETT>>In-Line Suction>>HME>>End-Tidal CO<sub>2</sub>  
Adapter>>Tubing>>Ventilator

### Additional Considerations:

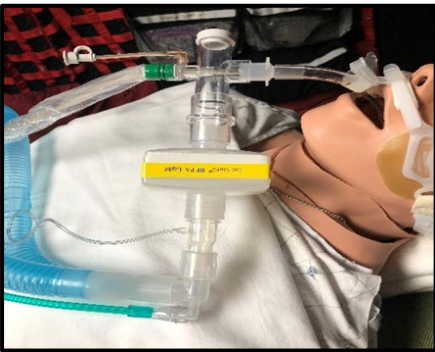
1. Reference [JTS Respiratory Failure CPG](#) for initial settings and ARDSnet protocol card for adjustment.
2. The mode should be set at "(S)CMV+"
3. ETT should be temporarily clamped with a padded hemostat during any circuit break.
4. HME (or HME-F) should be placed in the inspiratory limb to humidify gas delivered to patient.
5. HEPA filter (or HME-F) should be placed at the end of the expiratory limb to minimize viral aerosol.
6. A BVM connected to oxygen supply with viral filter and PEEP valve should always be available!
7. Oxygen hose should be connected directly to 50psi oxygen source (e.g., D-cylinder), NOT to a flow meter!

## Appendix H: BVM and SAVe II Set-Up Guide



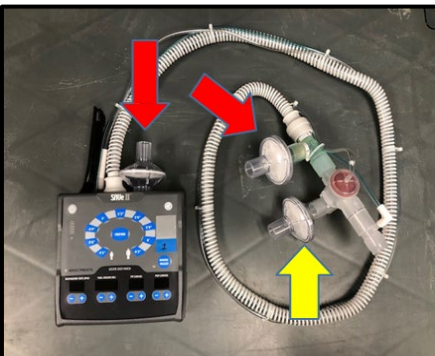
### For Bag-Valve Mask Ventilation (BMV):

ETT (or Mask)>>HEPA (or HME-F)>>End-Tidal CO<sub>2</sub> Adapter (optional)>> AMBU Bag (with PEEP valve)  
 \*Microorganism filters minimize viral aerosol formation  
 \*\*PEEP valves are critical supply for acute lung injury  
 \*\*\*End-Tidal CO<sub>2</sub> adapter is optional



### For Circuit using only one HME-F:

ETT>>In-Line Suction>>HEPA (or HME-F)>>End-Tidal CO<sub>2</sub> Adapter (optional)>>Tubing>>Ventilator  
 \*HME will NOT minimize viral aerosol formation  
 \*\*Must be HEPA or HME-F microorganism filter  
 \*\*\*End-Tidal CO<sub>2</sub> adapter is optional



### For SAVe II Ventilator Set-up:

For the SAVe II ventilator, 3 filters are necessary. The red arrows mark where room air is entrained into the circuit. The yellow arrow shows the exhalation valve.  
 \*Manufacturer does not recommend using this device in contaminated environments  
 \*\*The debris filter is designed to stop particulates, not chemical or biological agents  
 \*\*\*End-Tidal CO<sub>2</sub> adapter is optional

Appendix I: Preparation for Transport Checklist (courtesy SMOG CY20)

# PRE-FLIGHT CHECKLIST

(for Critical Care and Post-Surgical Transfers)

Once the decision is made to transfer a patient and an accepting physician has been obtained, the following steps will be taken to prepare the patient for transport:

Initials	Evaluation Steps
	1. Sending location/physician: _____ Accepting location/physician: _____ Flight nurse called: name / time: _____
	2. Anesthesia called: intubation if indicated. ETT secured/marked
	3. Patient meets criteria for en route critical care transport: risk documented by sending physician ( <a href="#">POST-OPERATIVE and CC INTRAFACILITY TRANSFER, Pre-Transfer Patient Status Requirements</a> )
	<b>Preparation Steps</b>
	<b>Positioning and Proper Monitoring:</b>
	1. Patient moved to litter (collapsible handles), positioned, padded, strapped, equipment (with necessary attachments) added and secured.
	2. For head-injured patients, a pre-sedation neurologic examination will be performed. GCS and neurological exam documented on the en route care form, suggest placing patient sitting at 30°-45°.(For eye injured patients, fox shield in place. For burn patients, <a href="#">JTS burn sheet initiated.</a> )
	3. Ventilator switched to PMI vent at least 20-30 min prior to flight and set with transfer settings ordered by physician.
	4. IV / IO access verified, patent, and secured.
	5. Arterial line inserted and secured, if indicated. Transducer accessible.
	6. Ventilator tubing checked to be free from obstruction, with ETCO <sub>2</sub> and secondary lines attached.
	7. Orogastric or nasogastric tube is inserted (unless contraindicated), placement verified with chest x-ray, and attached to low-intermittent suction.
	8. Chest tubes to water seal/suction (place Heimlich valve for non-atrium chest drainage systems).
	9. Wound vacuum disconnected and stowed.
	10. Foley catheter secured, urine output measured and documented.
	<b>Equipment, Medication, Chart, and Personnel Preparation:</b>
	11. Medications needed for flight prepared and organized.
	12. Flight equipment bag obtained and checked. Backup pulse oximeter readily available.
	13. Complete chart photocopied (including x-ray cd), patient belongings bagged and tagged. Transfer Document, or other theater / unit approved transfer document, has been initiated.
	14. Earplugs and eye protection for patient and flight nurse.
	15. If facility sends medical attendant, attendant must have relevant personal protective equipment. In a combat environment this includes: Uniform, Kevlar, IBA, Weapon, ID Card, and equipment for transport.
	<b>Ventilator Management:</b>
	16. Blood gas (preferably ABG) obtained, 15 min after initial settings and ventilator changes. All efforts will be made to have a documented blood gas within 30 minutes prior to flight time.
	17. Adjust ventilator settings and check O <sub>2</sub> tank for length of flight. Resuscitator bag under patient's head with tubing connected to O <sub>2</sub> source, vent tubing free from obstruction.
	<b>Final Verification:</b>
	18. Transferring Physician, Flight Paramedic, ECCN (or Flight Provider) verbally agrees to flight care plan.
	19. Critical Care Transfer Orders reviewed and signed by transferring physician.( <a href="#">STANDARD ORDER SET for CRITICAL CARE TRANSFERS</a> )
	20. Enroute CC Transfer Document with completed preflight and enroute care data handed over to and confirmed by receiving provider / facility.



## Appendix J: Virtual Critical Care Call (Vc3) Script (Courtesy PFC Group CY17)

VIRTUAL CRITICAL CARE CONSULTATION (VC3) GUIDE – 8 July 2017 (v3) To be used with Prolonged Field Care Card																																																		
<p>1. Before calling, E-mail image of the casualty (wounds, environment, etc.), "capabilities" (back of page), &amp; vital signs trends to <a href="mailto:dod.VC3@mail.mil">dod.VC3@mail.mil</a></p> <p>2. If call not answered: a) call next number on PACE or b) call back in 5 – 10 min.</p> <p>3. If unable to provide information due to operational security, state so.</p>																																																		
<p>P: Commercial: +1 (210) 916 – VCCC (8222), DSN: (312) 429 – 8222 (TELE-CRITICAL CARE CONSULTATION)</p> <p>A: Commercial: +49 6371 – 9464 – 7141, DSN: (314) 590 – 7141 (LRMC ICU, ASK FOR ON-CALL PHYSICIAN)</p> <p>C:</p> <p>E:</p>																																																		
<p>This is _____ I am a (job/ position) _____</p> <p>My best contact info is: _____</p> <p>YOUR best contact info is (Consultant's number): _____ Alternate e-mail: _____</p>																																																		
*** PAUSE POINT to CONFIRM CONTACT INFO ***																																																		
<p>I have a _____ year-old _____ (sex) _____ (active duty/foreign national/OGA, etc.), who has the following:</p> <p>Mechanism of Injury or known diagnosis(es)</p> <p>The injury/start of care occurred _____ hours ago. Anticipated evacuation time is (hours from now):</p> <p>Injuries/Problems/Symptoms:</p> <p>_____</p> <p>_____</p> <p>Treatments:</p> <p>_____</p> <p>_____</p> <p>He/she is currently (circle) stable/ unstable, getting better/ getting worse/ getting worse rapidly</p> <p>Known Medication Allergies/Past medical/Surgical history is:</p> <p>_____</p> <p>I need help with (be specific if possible, i.e. "I need help reading this ECG," or "I need help stabilizing this patient," etc.)</p> <p>_____</p> <p>Other Consultants have recommended:</p> <p>_____</p>																																																		
*** PAUSE POINT for Remote Consultant to ask clarification questions ***																																																		
<table border="1"> <thead> <tr> <th>VITALS (current &amp; trend as of _____):</th> <th>HR</th> <th>BP</th> <th>RR</th> <th>SpO2</th> <th>EtCO2</th> <th>Temp</th> </tr> </thead> <tbody> <tr> <td>UOP(ml/hr)</td> <td>_____</td> <td>_____</td> <td>_____</td> <td>_____</td> <td>_____</td> <td>_____</td> </tr> <tr> <td>EXAM: Neuro</td> <td>_____</td> <td>_____</td> <td>_____</td> <td>_____</td> <td>_____</td> <td>_____</td> </tr> <tr> <td>Heart</td> <td>_____</td> <td>_____</td> <td>_____</td> <td>_____</td> <td>_____</td> <td>_____</td> </tr> <tr> <td>Lungs</td> <td>_____</td> <td>_____</td> <td>_____</td> <td>_____</td> <td>_____</td> <td>_____</td> </tr> <tr> <td>Abd</td> <td>_____</td> <td>_____</td> <td>_____</td> <td>_____</td> <td>_____</td> <td>_____</td> </tr> <tr> <td>LABS: ABG:</td> <td>_____</td> <td>Lactate: _____</td> <td>_____</td> <td>_____</td> <td>_____</td> <td>Other: _____</td> </tr> </tbody> </table>		VITALS (current & trend as of _____):	HR	BP	RR	SpO2	EtCO2	Temp	UOP(ml/hr)	_____	_____	_____	_____	_____	_____	EXAM: Neuro	_____	_____	_____	_____	_____	_____	Heart	_____	_____	_____	_____	_____	_____	Lungs	_____	_____	_____	_____	_____	_____	Abd	_____	_____	_____	_____	_____	_____	LABS: ABG:	_____	Lactate: _____	_____	_____	_____	Other: _____
VITALS (current & trend as of _____):	HR	BP	RR	SpO2	EtCO2	Temp																																												
UOP(ml/hr)	_____	_____	_____	_____	_____	_____																																												
EXAM: Neuro	_____	_____	_____	_____	_____	_____																																												
Heart	_____	_____	_____	_____	_____	_____																																												
Lungs	_____	_____	_____	_____	_____	_____																																												
Abd	_____	_____	_____	_____	_____	_____																																												
LABS: ABG:	_____	Lactate: _____	_____	_____	_____	Other: _____																																												
*** PAUSE POINT for Remote Consultant to ask clarification questions ***																																																		

## Appendix J: Continued...

Plans/Recommendations						
PRIORITY	SYSTEM/PROBLEM		RECOMMENDATION			
	Neuro or problem #1					
	CV or problem #2					
	Pulm or problem #3					
	GI or problem #4					
	Renal or problem #5					
	Endocrine or problem #6					
	MSK/ Wound or problem #7					
	Tubes, lines, drains or problem #8					
	Prophylaxis/prevention or prob#9					
	Other					

TO-DO/ FOLLOW-UP/TO-STOP	NOTES
1.	
2.	
3.	
4.	
5.	
6.	

**\*\*\* PAUSE POINT, for Medic/Local Caregiver to ask clarification questions/READBACK \*\*\***

Available "kit" (supplies, equipment, medications) !! IF POSSIBLE PHOTOGRAPH AND SEND VIA EMAIL BEFORE CALLING !!

Commo:      Tempus i2i ID: \_\_\_\_\_ SAT#/Local Cell# \_\_\_\_\_  
                  Other (FaceTime, VSee, Skype, WhatsApp ,etc.): \_\_\_\_\_

IV access:      IV                      Central line                      IO (location)                      Other: \_\_\_\_\_  
 Monitor:      Propaq                      Tempus                      Foley                      Graduated urinal                      PulseOx only                      Exam Only  
                  Other: \_\_\_\_\_

IV Fluids:      Plasma-Lyte                      LR                      Normal Saline                      3% saline                      Other: \_\_\_\_\_  
 Colloids:      Hetastarch                      Albumin                      Other: \_\_\_\_\_

Blood products:      Whole blood                      PRBC                      Plasma                      FDP                      Platelets                      Other: \_\_\_\_\_

Medications:      Antibiotics: name/route/dose \_\_\_\_\_  
                  Morphine IV/ PO                      Other opioid (name/ IV/ PO): \_\_\_\_\_  
                  Fentanyl IV/ PO (pop)                      Ketamine  
                  Midazolam                      Diazepam (IV/ PO)  
                  TXA                      Other(s): \_\_\_\_\_

Airway/Breathing:      ETT                      Cric kit                      LMA                      BVM                      O2                      Suction (type): \_\_\_\_\_ Ventilator(model): \_\_\_\_\_

Miscellaneous: \_\_\_\_\_

## Appendix K: Minimum, Better, Best - Equipment and Supplies

Problem	Minimum	Better	Best
<b>PPE</b>	See Appendix on PPE, varies with intensity of exposure		
<b>Testing</b>	Malaria Rapid Diagnostic Testing (in endemic areas)	Plus: Ultrasound device 12-Lead ECG Influenza & Dengue Rapid Tests POCT Blood Gas POCT Glucometer	Above plus: Chest X-Ray COVID-19 PCR Testing Respiratory Pathogen Film Array Other testing per DOD COVID PMG Other clinically indicated testing
<b>Oxygen Supply</b>	Oxygen Generator Field Portable (SAROS™) <sup>a</sup>	Plus: Compressed oxygen cylinders	Plus: Oxygen Generating System
<b>Ventilator</b>	Bag-Valve-Mask Ventilation with PEEP valve, HEPA Filter (or HME-F), and oxygen supply	Rescue Ventilator (SAVE II)	Transport Ventilator (EMV+ 731 or Hamilton T1)
<b>In-line Filter Placement (Appendices E, F, G)</b>	HME-F (or HEPA Filter) at Y-Piece between ETT and ventilator tubing	Plus: HME/HME-F at Y-Piece and HEPA Filter in exhalation limb	Plus: In-line Heated Humidification Device (i.e. Hamilton H900)
<b>Monitoring</b>	Pulse Oximeter, Manual BP Cuff, Physical Exam Document trends using PFC Flowsheet or similar	Plus: End-Tidal Capnometry	Plus: Continuous cardiac monitoring Invasive arterial pressure monitoring
<b>IV Drips</b>	Drop counting (Drip Chamber)	In-line Dial-A-Flow device	IV Pump
<b>Medications</b>	Ketamine Midazolam Acetaminophen Ertapenem <sup>b</sup>	Plus: Etomidate Vecuronium Fentanyl Epinephrine Ceftriaxone Azithromycin Ondansetron	Plus: Desmedetomidine Propofol Norepinephrine Rocuronium Levofloxacin IV Glucocorticoid <sup>c</sup> Vasopressin
<b>Airway</b>	Laryngeal Mask Airway (Cricothyroidotomy for emergent cases)	Direct Laryngoscopy	Video Laryngoscopy
<b>Secretion Management (not including HMEs)</b>	Positioning Chest Percussion Bulb Suction	Plus: Bronchodilators 3% Saline <sup>d</sup> Suction device	Plus: N-Acetylcysteine <sup>d</sup> Consider anti-sialagogues <sup>e</sup>
<b>VTE Prophylaxis</b>	Ambulation <sup>f</sup>	Range of Motion Exercises Extremity Massage	Low Molecular Weight Heparin or Unfractionated Heparin

a - While compressed gas cylinders are more widely fielded than OGFP/SAROS systems, the prolonged need for oxygen requires an emphasis on being able to supply O<sub>2</sub> for a prolonged period of time.

b - Ertapenem is a widely fielded broad spectrum antibiotic with adequate activity against common organisms causing community acquired pneumonia. Ertapenem is not necessary (for CAP) if antibiotics specific for CAP are available.

c - Methylprednisolone (Solu-medrol), Hydrocortisone (Solu-cortef), or Dexamethasone

d - Require pre-treatment with a bronchodilator to avoid bronchospasm

e - Anti-sialagogues are of uncertain benefit; consider telehealth consultation before use

f - Patients that are able to ambulate or at least perform bedside exercises are encouraged to do so. Non-graduated compression stockings or circumferential ACE wraps are NOT encouraged given risk for venous compression and stasis with higher risk for thrombosis.

## Appendix L: Example Equipment Checklists

Durable Equipment Kept On Standby		
<input type="checkbox"/> Litter Stanchions (or fabricated stands)	<input type="checkbox"/> Power Strips / Extension cord	<input type="checkbox"/> Hemodynamic Monitoring Equipment
<input type="checkbox"/> NATO or Talon Litter	<input type="checkbox"/> EMV+ 731 (or Hamilton T1) with charger	<input type="checkbox"/> Infusion Pumps with extra battery and charging cable
<input type="checkbox"/> Mattress pad, inflatable sleeping pad, or Warrior Evacuation Litter Pad	<input type="checkbox"/> Portable Suction Unit with charger	<input type="checkbox"/> Ultrasound with phased array and linear probes
<input type="checkbox"/> 3x blankets or large pillows for offloading pressure points	<input type="checkbox"/> D-Cylinder(s) with regulator, wrench, and high pressure tubing	<input type="checkbox"/> Video-laryngoscope (e.g., GlideScope) and rigid intubating stylet
<input type="checkbox"/> 550 Cord for hanging drips	<input type="checkbox"/> Oxygen Generator Field Portable (i.e. SAROS) with charger	<input type="checkbox"/> i-STAT with several cartridges

Intubation & Ventilator Kit		
<input type="checkbox"/> Bag-Valve Mask	<input type="checkbox"/> GlideScope Sheath, Size 4	<input type="checkbox"/> Tube Securement (e.g. Hollister AnchorFast, Thomas Tube Holder)
<input type="checkbox"/> Non-Rebreather Mask	<input type="checkbox"/> GlideScope Sheath, Size 3	<input type="checkbox"/> Yankauer with Suction Tubing
<input type="checkbox"/> HME-Filter (1x for BVM, 1x for Vent)	<input type="checkbox"/> GlideScope Stylet	<input type="checkbox"/> 18fr Salem Sump NG/OGT
<input type="checkbox"/> Color-Capnometer OR EtCO <sub>2</sub> monitor adapter	<input type="checkbox"/> Direct Laryngoscope handle with batteries	<input type="checkbox"/> 60mL Toomey Syringe
<input type="checkbox"/> ETT, 7.0mm ID	<input type="checkbox"/> Macintosh DL blade, size 3 or 4	<input type="checkbox"/> Large Hemostat for clamping ETT
<input type="checkbox"/> ETT, 8.0mm ID	<input type="checkbox"/> Miller DL blade, size 2	<input type="checkbox"/> In-line suction adapter
<input type="checkbox"/> 10mL Syringe	<input type="checkbox"/> Flexible Stylet	<input type="checkbox"/> Ventilator Tubing
<input type="checkbox"/> Airway Introducer (a.k.a. Bougie)	<input type="checkbox"/> LMA, iGel size 4 OR standard LMA	
<input type="checkbox"/> Cricothyroidotomy Kit	<input type="checkbox"/> Tongue Depressor	

Central Line Placement Kit (if within scope of practice)	
<input type="checkbox"/> Appropriately sized surgical gloves	<input type="checkbox"/> 1x Clear Occlusive Dressing (i.e. Tegaderm)
<input type="checkbox"/> 2x Chloraprep or Povidone-Iodine swabs	<input type="checkbox"/> 1x Cordis Introducer Catheter Kit
<input type="checkbox"/> 1x Needleless Port (a.k.a. Posi-Flow Valves)	<input type="checkbox"/> 1x Surgical Drape (if not included in kit)

Arterial Line Placement Kit (if within scope of practice)		
<input type="checkbox"/> Appropriately sized surgical gloves	<input type="checkbox"/> 1x Straight Needle with 2-0 Silk Suture	<input type="checkbox"/> 1x VAMP Pressure Transducing Tubing
<input type="checkbox"/> 2x Chloraprep or Povidone-Iodine swabs	<input type="checkbox"/> 2x 4x4 Gauze Packets	<input type="checkbox"/> 1x Pressure Bag (500mL)
<input type="checkbox"/> 2x ARROW Radial Arterial Line 'Dart'	<input type="checkbox"/> 1x Clear Occlusive Dressing (i.e. Tegaderm)	<input type="checkbox"/> 1x 500mL Normal Saline

Medication Administration Kit		
<input type="checkbox"/> 4x Peripheral IV Start Kit*	<input type="checkbox"/> 2x 500mL Normal Saline (carrier fluid)	<input type="checkbox"/> 10x 10mL Syringes
<input type="checkbox"/> 4x Primary IV Tubing, 10gt	<input type="checkbox"/> 2x 250mL Normal Saline (for drips)	<input type="checkbox"/> 10x 5mL Syringes
<input type="checkbox"/> 20x Alcohol Swabs	<input type="checkbox"/> 4x 100mL Normal Saline (for drips)	<input type="checkbox"/> 20x 10mL Saline Flush
<input type="checkbox"/> 1x 1" Tape Roll	<input type="checkbox"/> 2x 1000mL Lactated Ringers (for bolus)	<input type="checkbox"/> 20x 18g Needles

Additional Equipment (Foley, Pneumothorax Management, Nursing Care)	
<input type="checkbox"/> Foley Catheter Kit (e.g. Bard or Chinook prepackaged kits)	<input type="checkbox"/> Wet Wipes (for bed-baths)
<input type="checkbox"/> 4x 14g 3.125 inch needle-catheters for chest decompression	<input type="checkbox"/> Absorbent pads (a.k.a. chux)
<input type="checkbox"/> Chest Tube Kit*	<input type="checkbox"/> Bedsheet or HPMK as drawsheet
<input type="checkbox"/> 1x Chest Drainage System (e.g. Atrium or Pleur-evac; water seal preferable over Heimlich valve to prevent excessive aerosol formation)	

\* Seldinger technique smaller bore chest tube kits (e.g. Thal Quick or Cook 14fr catheters) can be used for atraumatic pneumothorax; however, these are more procedurally complicated and not usually available in austere locations