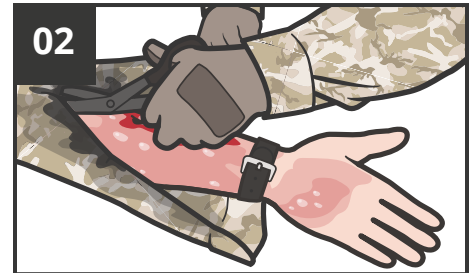


# BURN TREATMENT

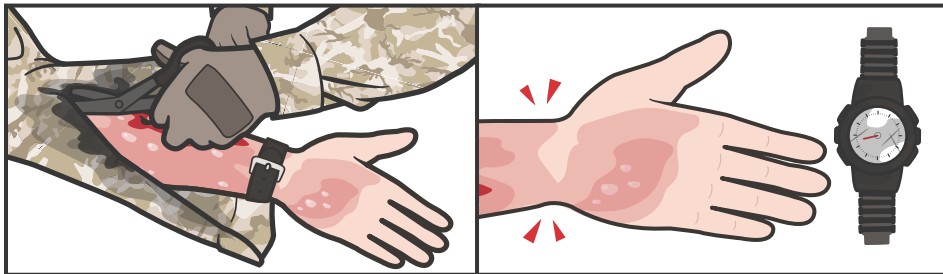
**NOTE:** All medical interventions can be performed, even if the patient is burned.



**ELIMINATE** the source of the burn.

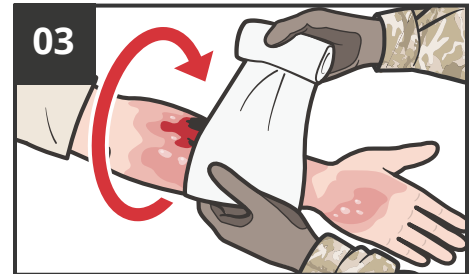


**UNCOVER** the burn after the casualty has been removed from the source of the burn.



- a Cut clothing around the burned area.
- b Gently lift clothing away from burned area.

- c If the casualty's hand(s) or wrist(s) have been burned, remove jewelry (rings, watches).

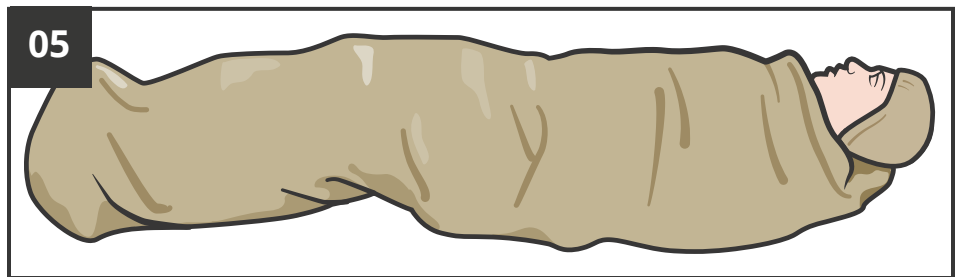


**APPLY** sterile, dry dressings to burned skin areas.

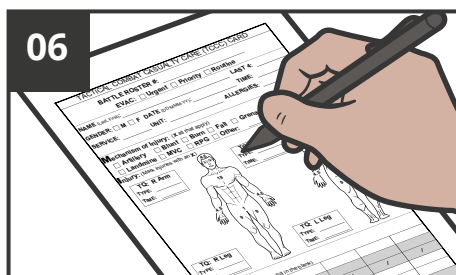
**CAUTION:** Do not force clothing off that is stuck to burnt skin.



Keep the casualty warm and **PREVENT** hypothermia.



**MONITOR** casualty closely for life-threatening conditions, check for other injuries, and treat for shock (if applicable).



**DOCUMENT** all findings and treatments on a DD Form 1380 TCCC Casualty Card and attach it to the casualty.