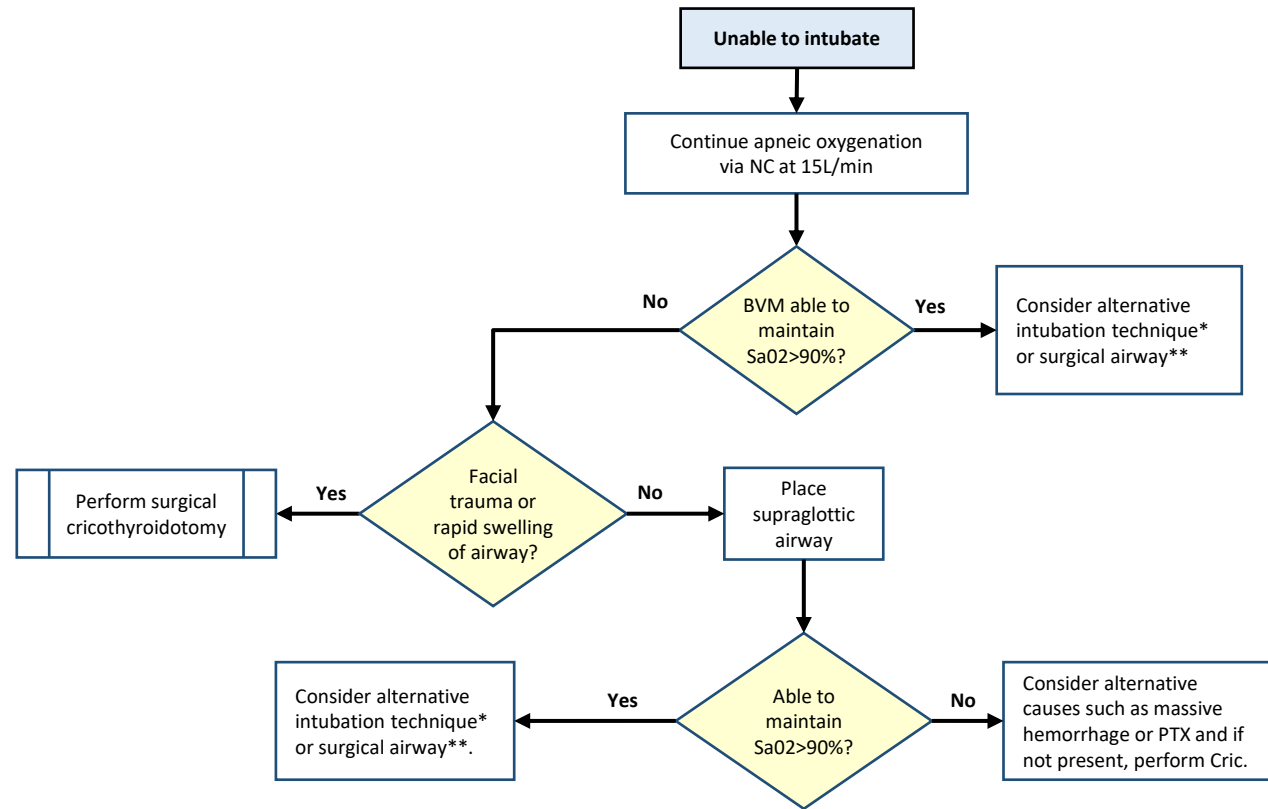


Figure 1. Difficult Airway Management



*Alternative intubation techniques include:

- Video or direct laryngoscopy (whichever not used first)
- Fiberoptic scope
- Transtracheal illumination device
- Retrograde wire with Magill forceps
- Changing providers

**Surgical airway includes both tracheostomy and surgical cricothyroidotomy.